



*Japanese Bird Art, 1950 to present day*

**Part 2**  
**Intaglio**  
**prints**  
**by 85 artists**

## Introduction

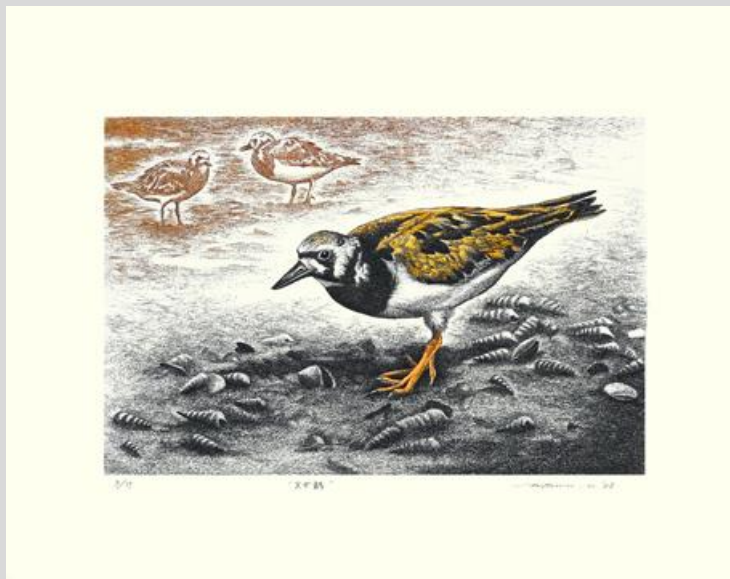
Intaglio printmaking is a European invention. In this method of printmaking the design is cut into a piece of metal and the cuts are filled with ink. A piece of paper is then pushed into the cuts using a mechanical press to transfer the ink to paper. Cuts could be made using a metal tool or acid or both to create different artistic effects. This method is very different from the traditional woodblock printing method used by Japanese printmakers. First, it required metal instead of wood. Second, the design was cut into the metal while in woodblock printing the areas around the design were cut away leaving the design standing in relief above surrounding areas of wood. Third, it required a mechanical press to transfer ink to paper while in woodblock printing hand pressure was sufficient to transfer ink to paper by rubbing the backside of the paper. Perhaps because of these major differences between intaglio and woodblock printmaking the intaglio technique was largely ignored by Japanese printmakers from the late 18<sup>th</sup> century, when the first intaglio print was made by a Japanese printmaker, until the mid-20<sup>th</sup> century. At that time it became part of the academic curriculum in post-secondary art schools and a number of students subsequently continued to use it during their professional career. From the 1950s to date about one hundred Japanese artists have used intaglio printmaking to make prints that featured birds (i.e., bird prints). Prints by eighty-five of these artists are part of the Reader Collection of Japanese Art and this virtual exhibition includes an example of the work of each artist. Some artists (prints 1-9) drew birds objectively (i.e., true-to-life shape and color) while others (prints 10-58) drew birds only semi-objectively. The remaining artists (prints 59-85) were more creative and intentionally falsified both bird shape and color.

For each of the eighty-five prints the following information is given: name of the bird depicted (when identifiable), name of the artist, print title (when titled) and print size. Each of the prints has wide, white borders which, of course, are of less interest than the design itself. To allow details of the design to be seen more easily on a computer screen the design portion of each print is shown alongside the entire print (i.e., with borders).

## Additional Reading

Hosono, Masanobu. 1978. *Nagasaki Prints and Early Copperplates*. Kodansha International, New York.

1 Ruddy turnstone  
(*Arenaria interpres*) by  
**Mitsuru Nagashima**,  
entitled ruddy turnstone,  
400 x 320 mm





2 Common kingfisher  
(*Alcedo atthis*) by **Tadashi  
Ikai**, entitled river breeze,  
440 x 300 mm



川風





3 Japanese quail (*Coturnix japonica*) by **Yoshimichi Fujimoto**, entitled autumn quail, 390 x 470 mm



3/10

秋雀





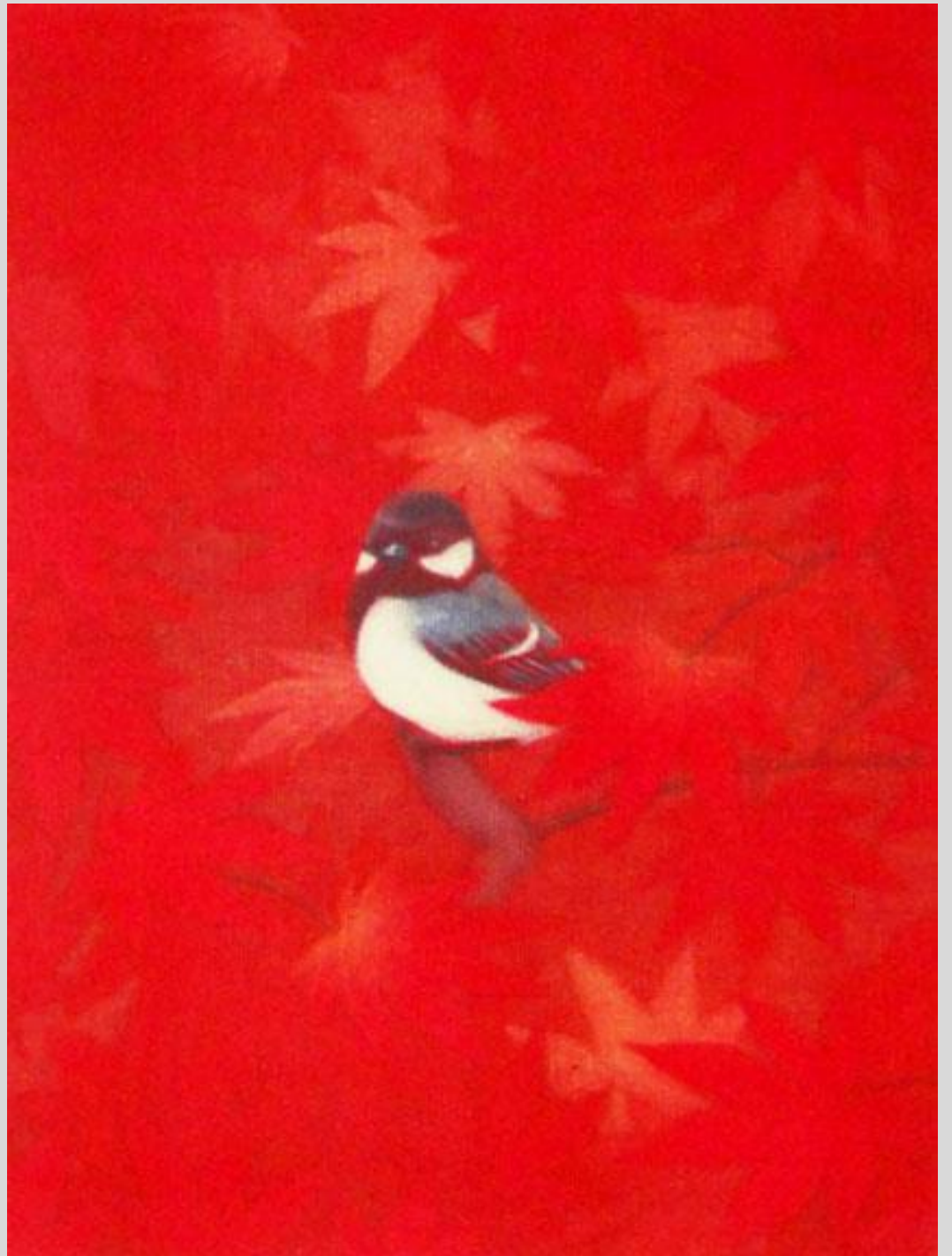
4 Great tit (*Parus major*) by **Hidetaka Yamanaka**,  
entitled red autumnal color, 285 x 380 mm



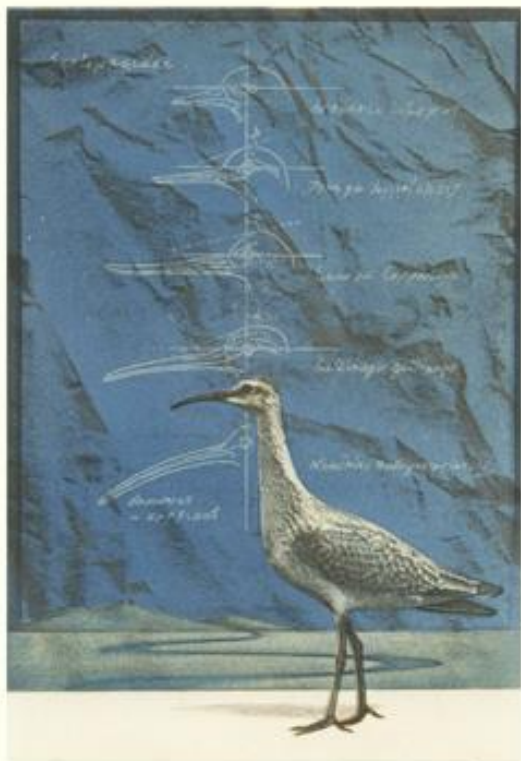
7/10

秋色 (red)

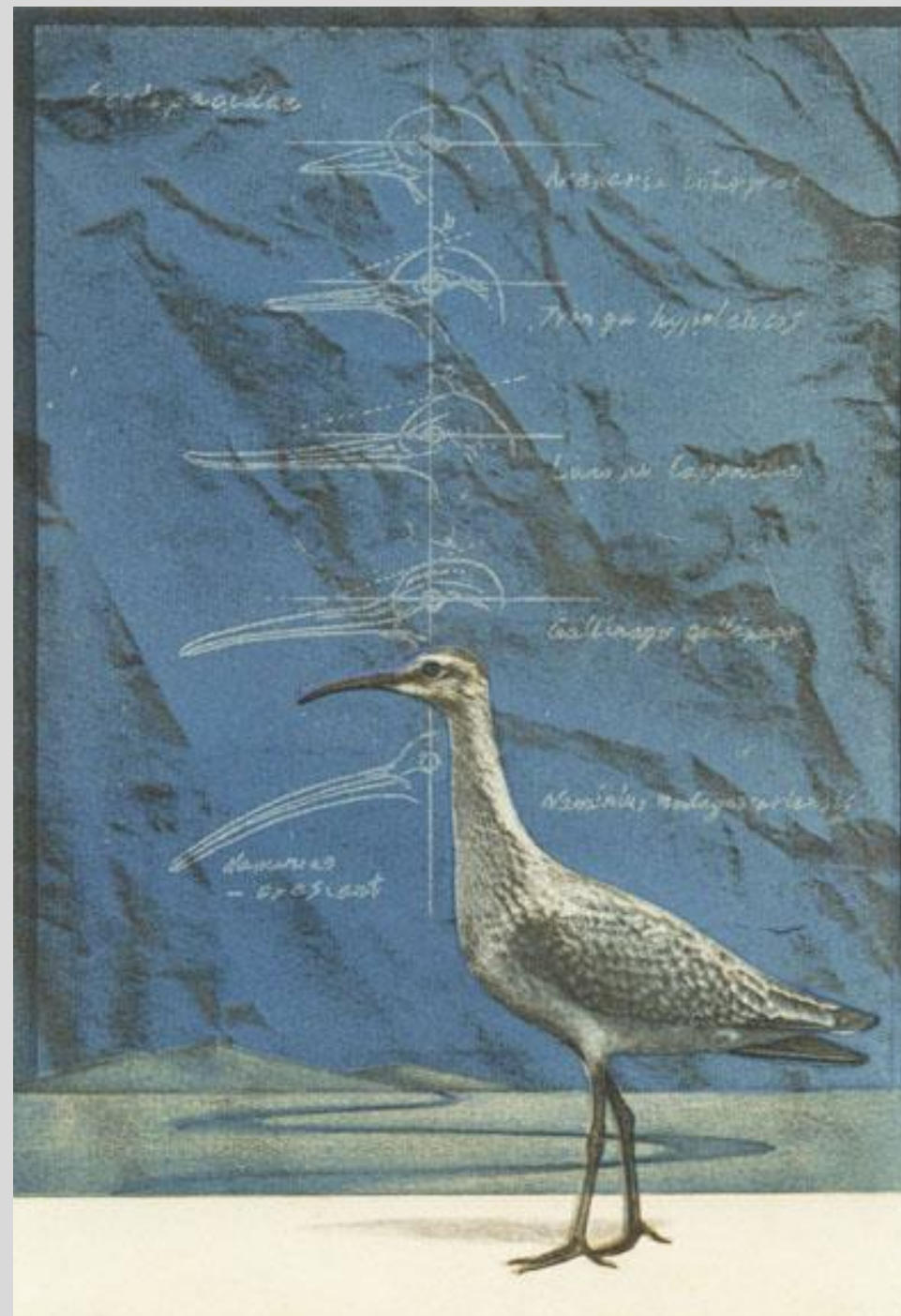
Hidetaka Yamanaka



5 Common snipe (*Gallinago gallinago*) by Akira Baba, entitled memory on paper – bird II, 205 x 280 mm



Common snipe Memory on paper - Bird Akira Baba





6 Domestic goose (*Anser cygnoides*) by **Mikio Watanabe**, entitled goose I, 300 x 250 mm



1/6. 0.2. 1. watanabe



7 Siberian blue robin (*Luscinia cyane*) by Akira Fujie, entitled purple beautyberry, 260 x 375 mm



1977

Akira Fujie



8 Domestic fowl (*Gallus gallus*) by **Keisuke Akahoshi**, entitled it's mine, 180 x 240 mm

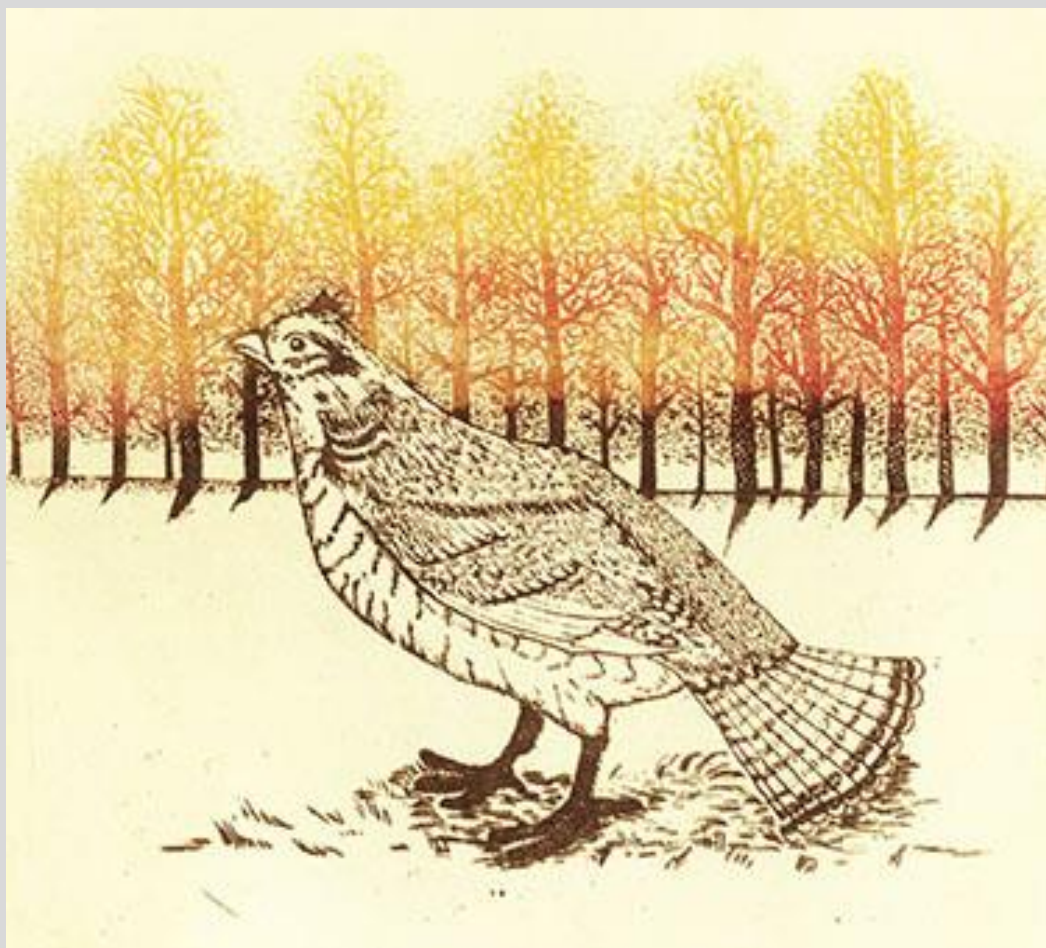


27/70 Keisuke Akahoshi





9 Hazel grouse (*Bonasa bonasia*) by **Etsuko Ishikawa**, entitled walking, 215 x 190 mm



10 Mallard duck (*Anas platyrhynchos*) by **Shigeru Oda**, entitled bird with flowers, 485 x 370 mm

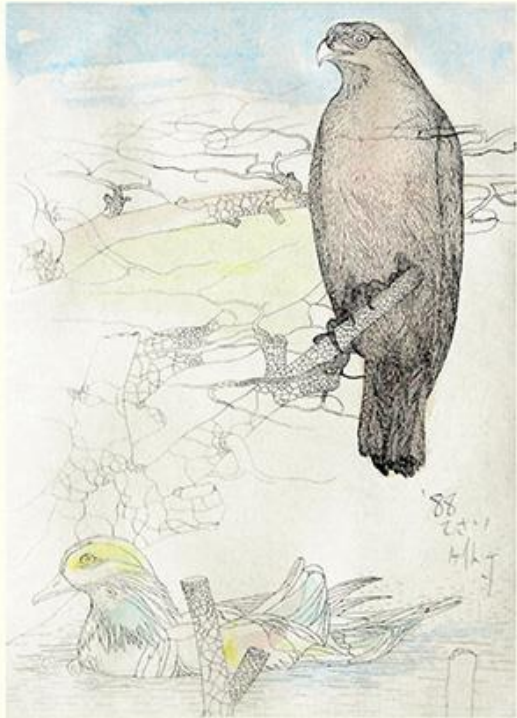


11 Indian peafowl (*Pavo cristatus*) by Takehiko Mōri, entitled bright light, 320 x 395 mm



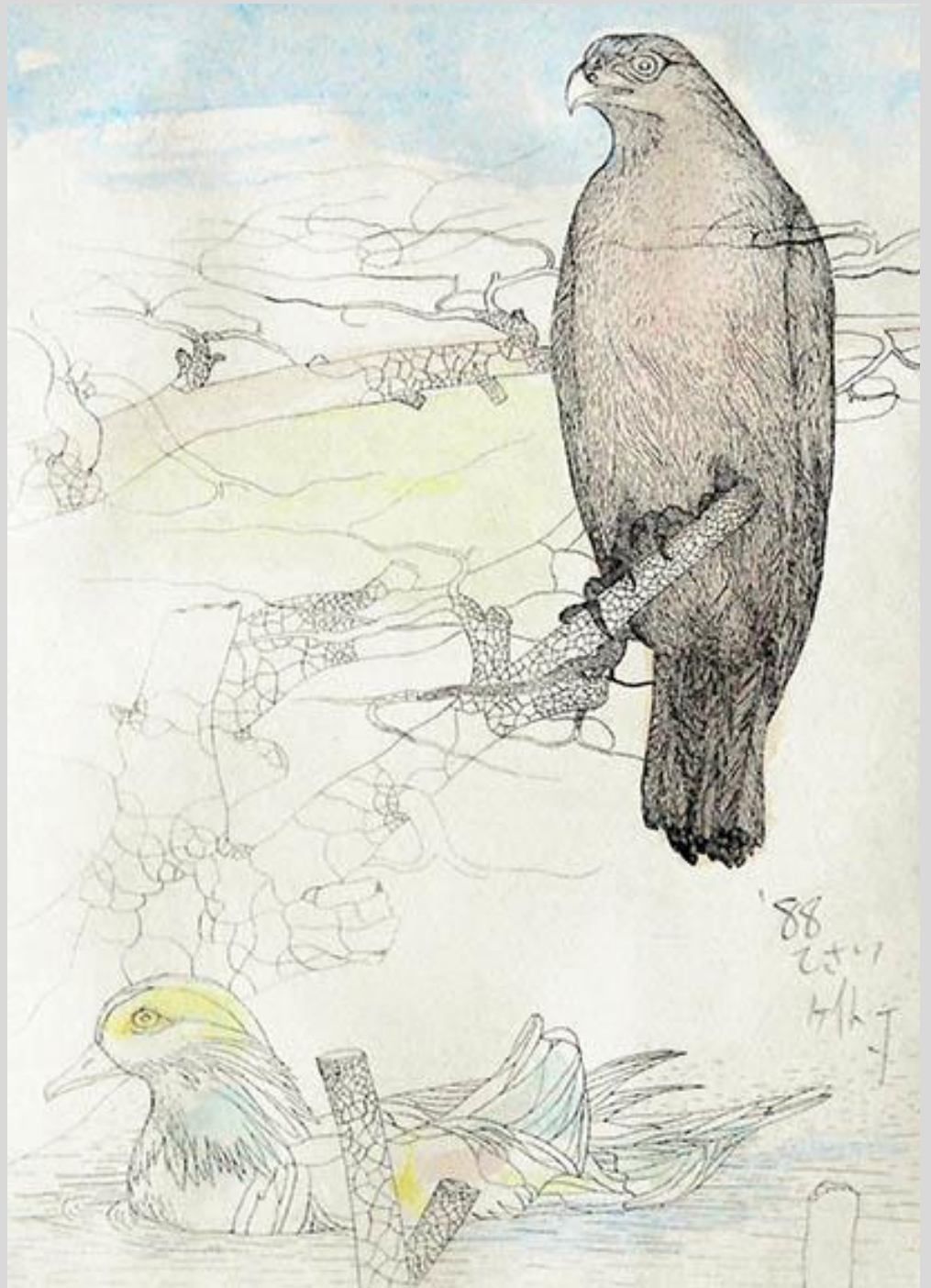


12 Black kite (*Milvus migrans*) and mandarin duck (*Aix galericulata*) by Keito Joh, 280 x 335



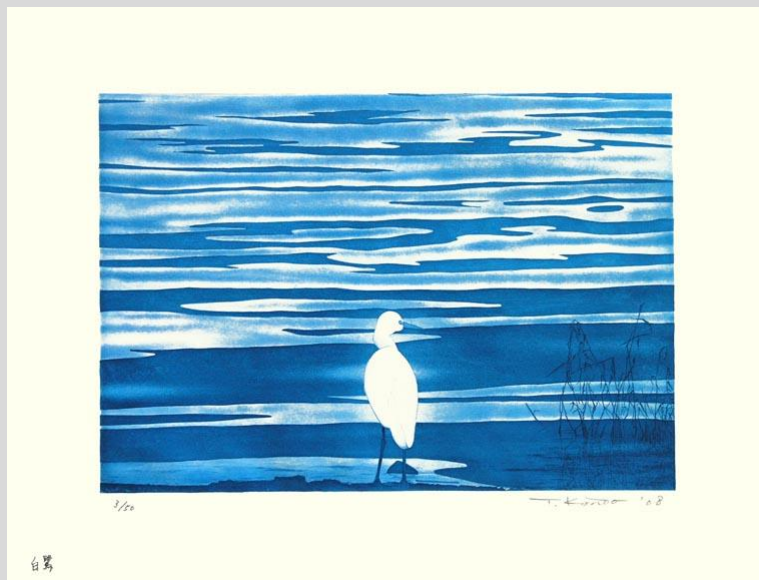
A.P

Keito Joh



'88  
Keito Joh

13 Little egret (*Egretta garzetta*) by **Teruhiko Kondo**, entitled little egret, 400 x 305 mm



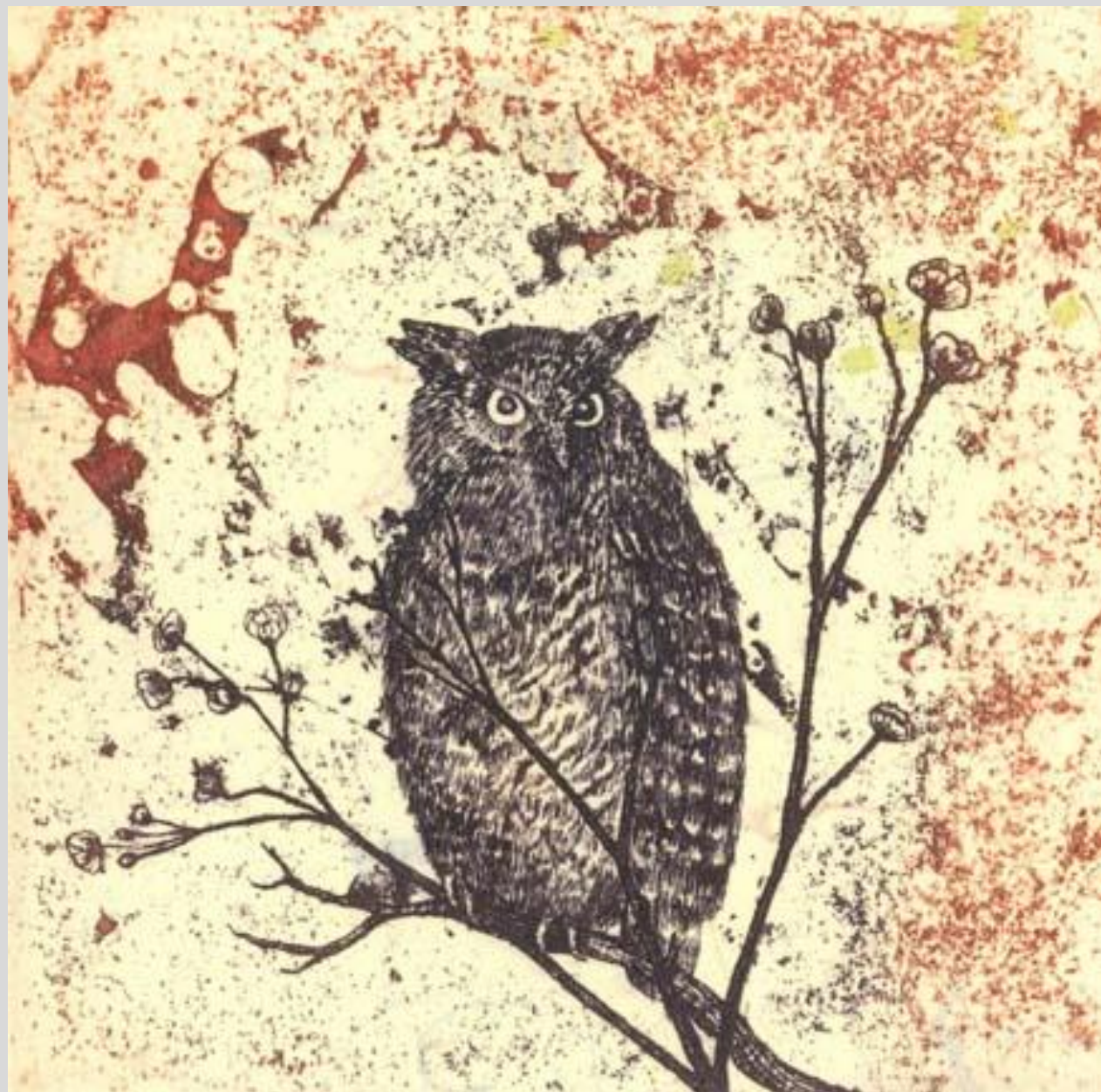


14 Eurasian eagle-owl (*Bubo bubo*) by  
**Tomiko Matsuno**, 195 x 195 mm



5/50

Tomiko Matsuno





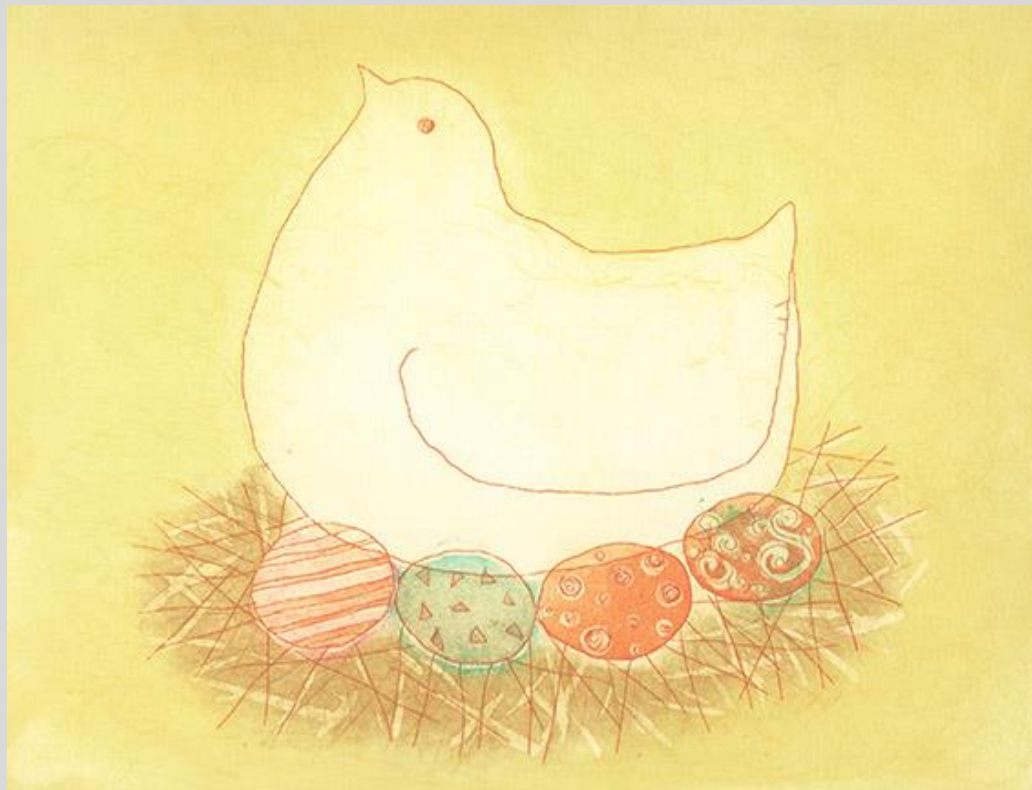
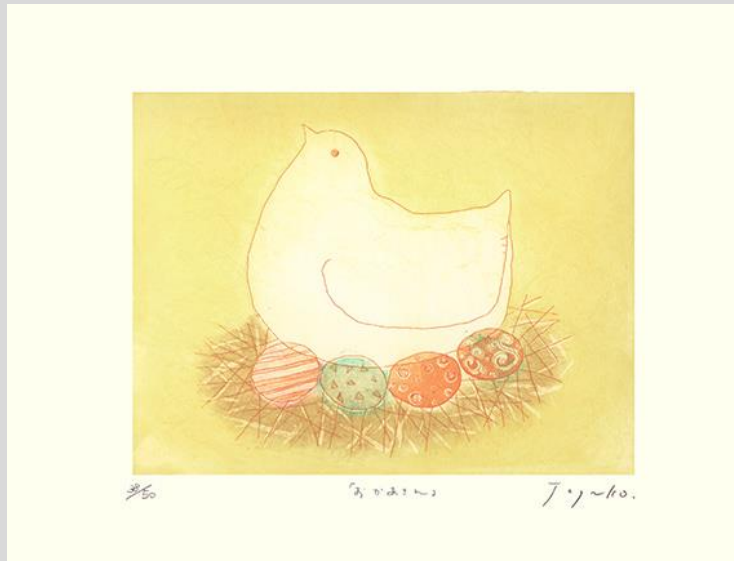
15 Babbler (*Pomatostomus* sp.) by Ryō Arai, 165 x 230 mm



ep  
Ryō Arai



16 Domestic fowl (*Gallus gallus*) by **Tazuko Nakamura**, entitled *mom*, 360 x 265 mm

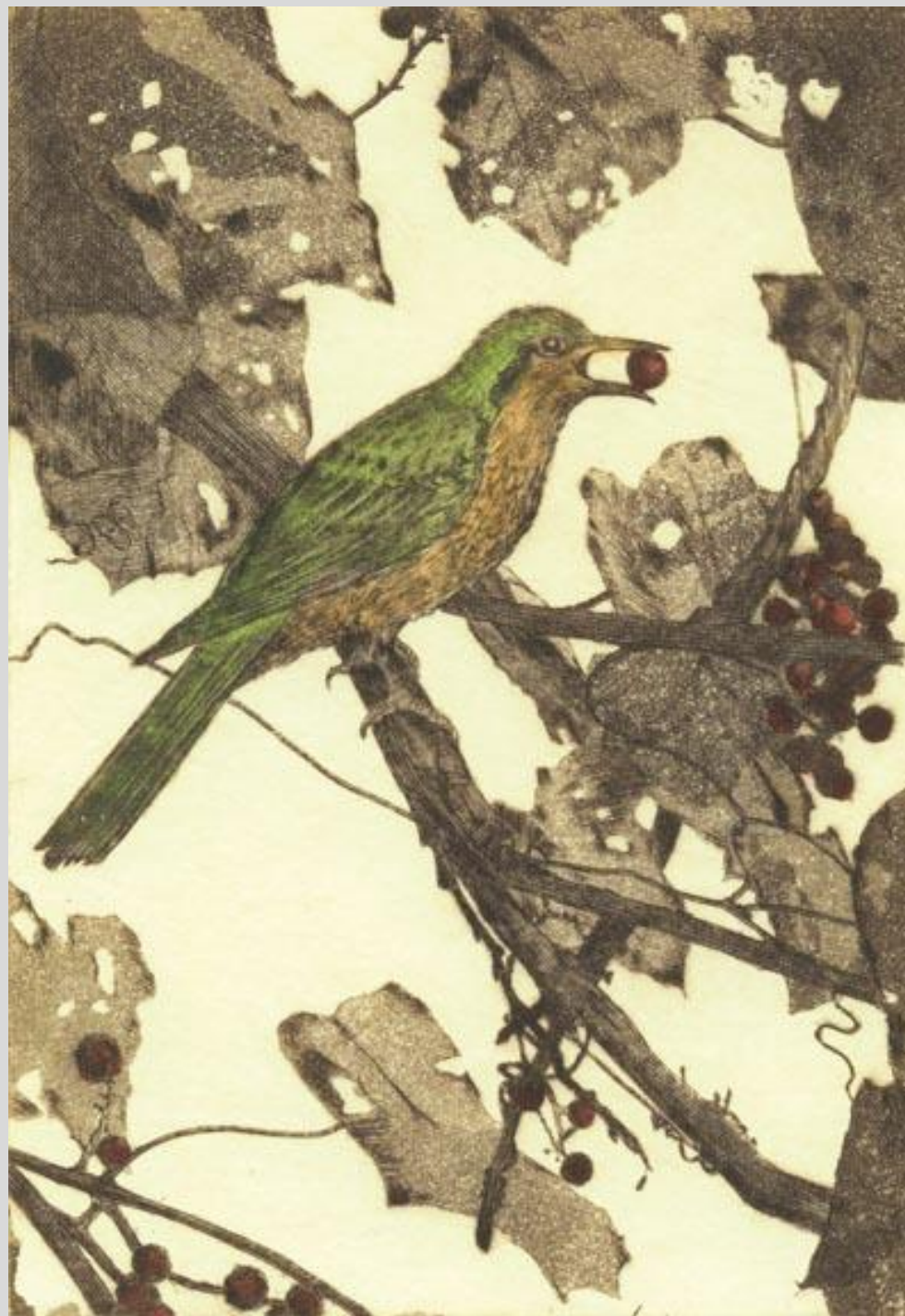




17 Japanese white-eye (*Zosterops japonicus*) by Jusō Watanabe, 255 x 280 mm



4/35 Jusō Watanabe





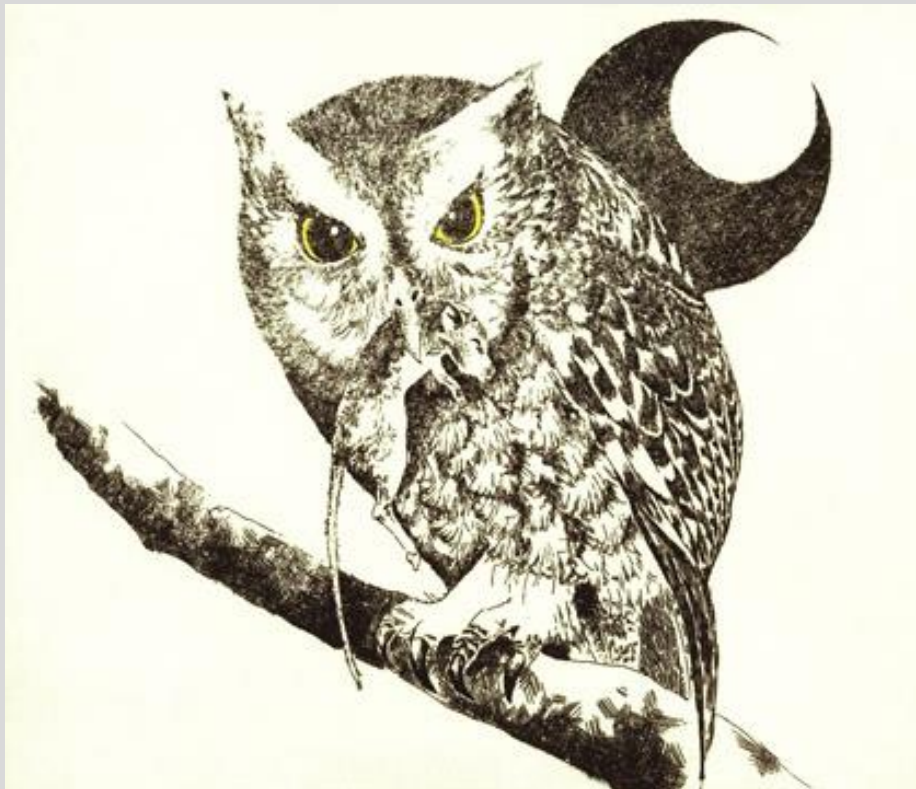
18 Oriental turtle-dove (*Streptopelia orientalis*) by **Hideko Nagahama**, entitled with all my heart, 200 x 250 mm



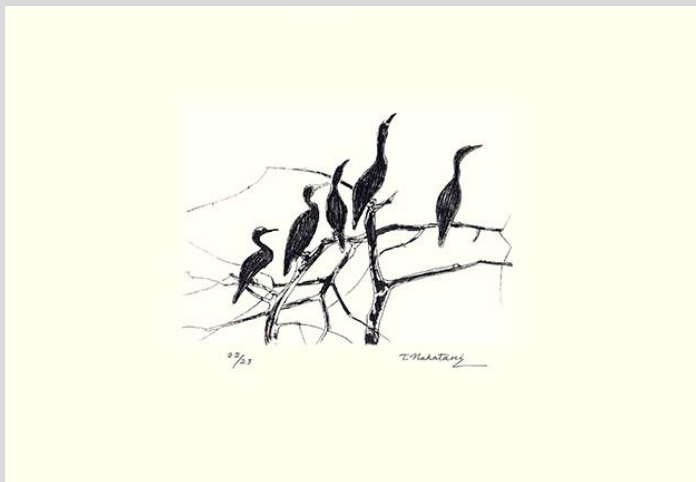
"To with all my heart" Hideko



19 Scops owl (*Otus* sp.) by  
**Hiroko Yamada**, entitled  
hunting, 300 x 240 mm

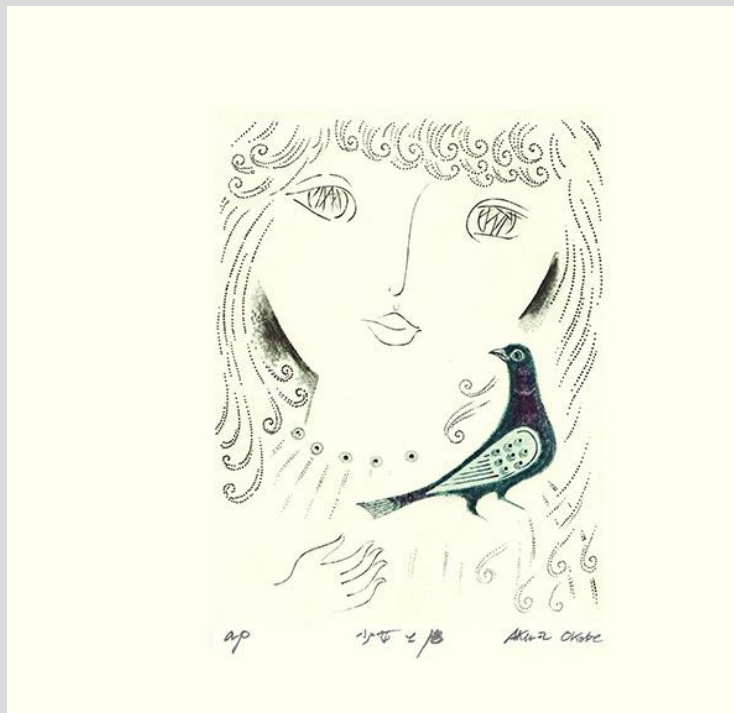


20 Cormorant  
(*Phalacrocorax* sp.) by Tai  
Nakatani, 380 x 285 mm





21 Rock dove (*Columba livia*) by Akira Okabe,  
entitled girl with dove, 245 x 245 mm

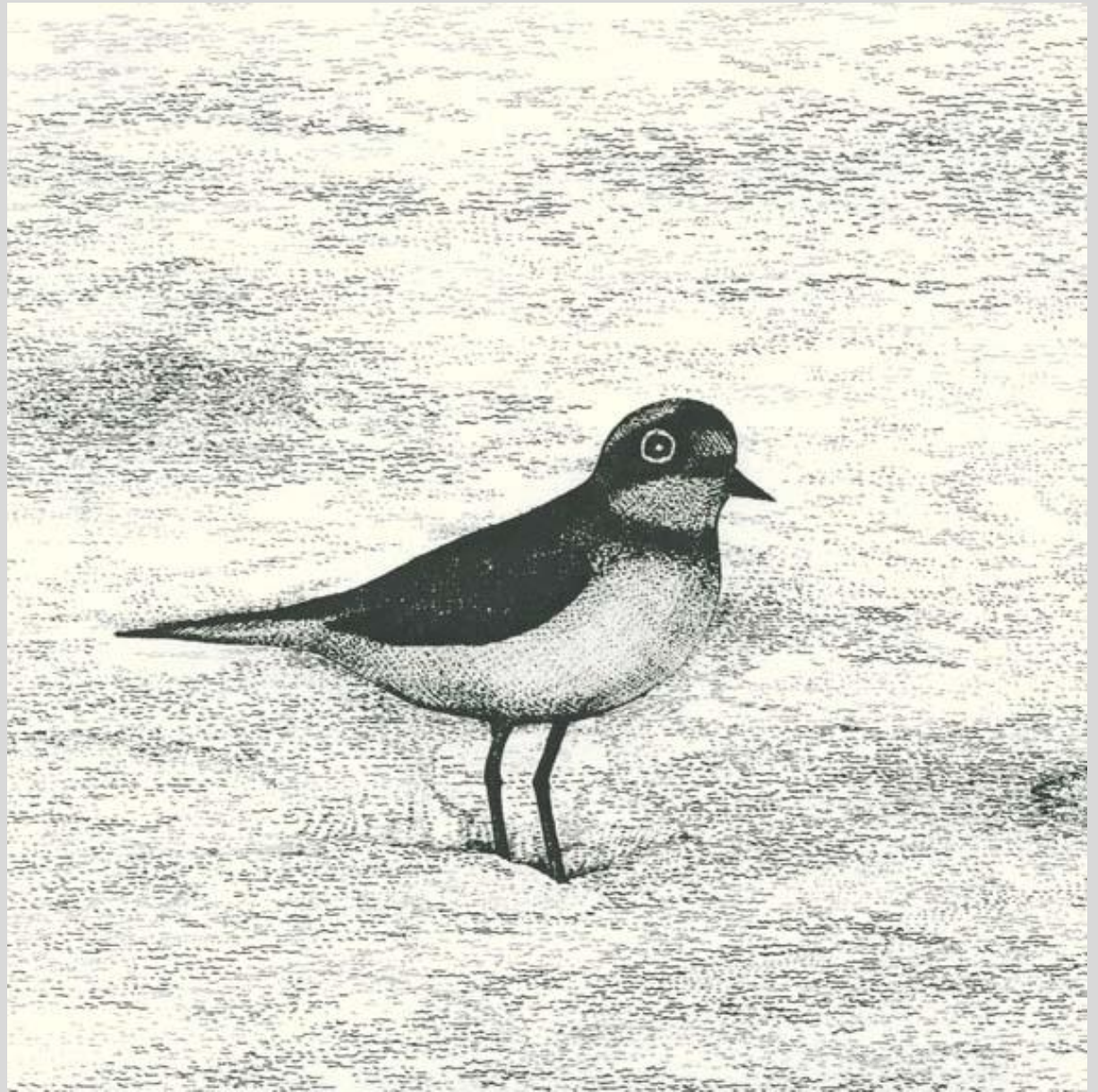


22 Little ringed plover (*Charadrius dubius*)  
by **Tatsumasa Watanabe**, entitled water  
bird II, 235 x 255 mm



1977

Tatsumasa Watanabe





23 Ural owl (*Strix uralensis*) by **Yukie Matsui**,  
entitled always together,  
240 x 170 mm



24 Cormorant (*Phalacrocorax* sp.) by **Shigeki Kuroda**,  
entitled cormorant, 140 x 205 mm



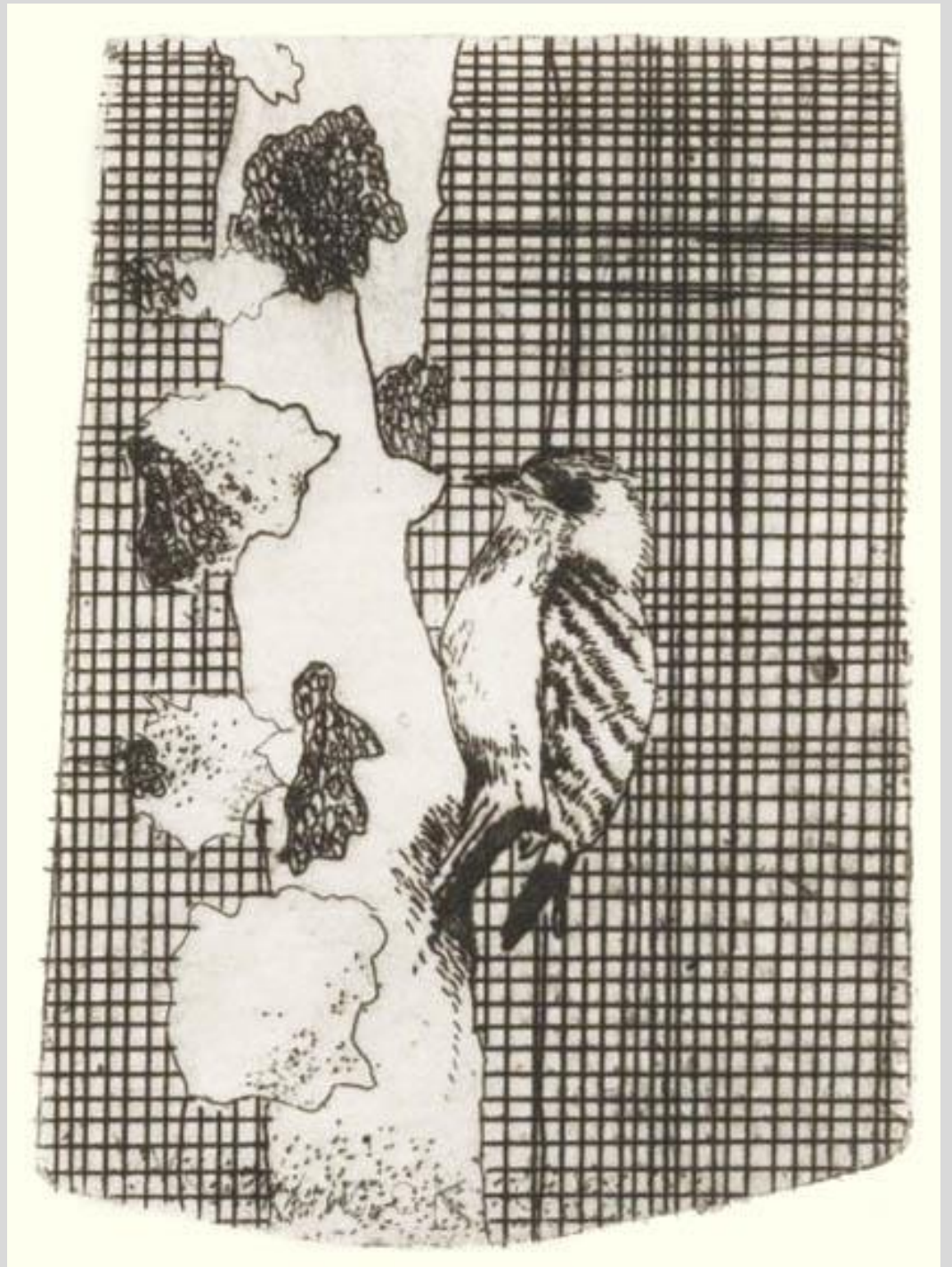
5/50

Shigeki Kuroda





25 Pygmy woodpecker (*Dendrocopos kizuki*) by  
**Hideo Yoshihara**, 165 x 225 mm



26 Dusky thrush (*Turdus naumanni*) by **Takeshi Nakai**, 135 x 155 mm

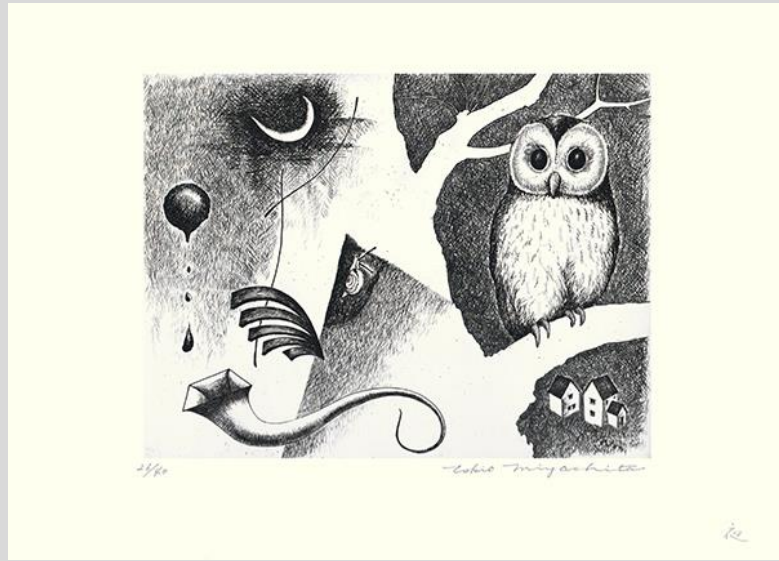




27 Blakiston's fish owl (*Ketupa blakistoni*) and scops owl (*Otus scops*) by **Kōji Ikuta**, entitled Blakiston's fish owl and scops owl, 460 x 260 mm

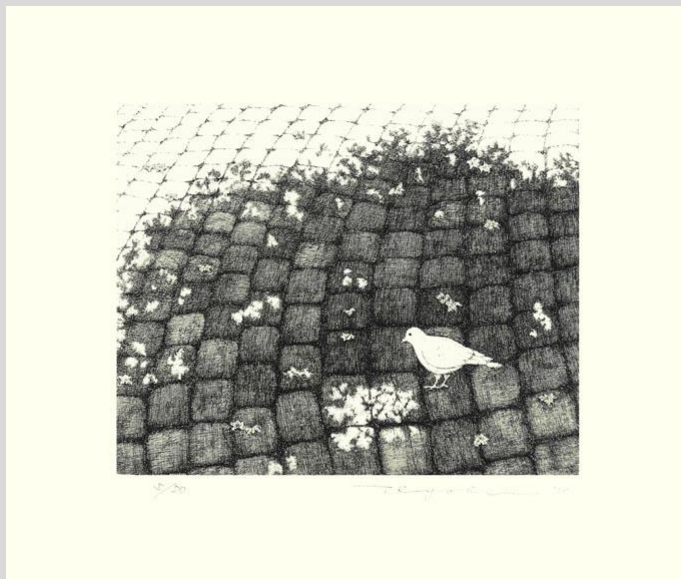


28 Ural owl (*Strix uralensis*) by **Tokio Miyashita**, 360 x 260 mm





29 Rock dove (*Columba livia*) by **Ryōhei Tanaka**,  
entitled stone paving,  
300 x 255 mm

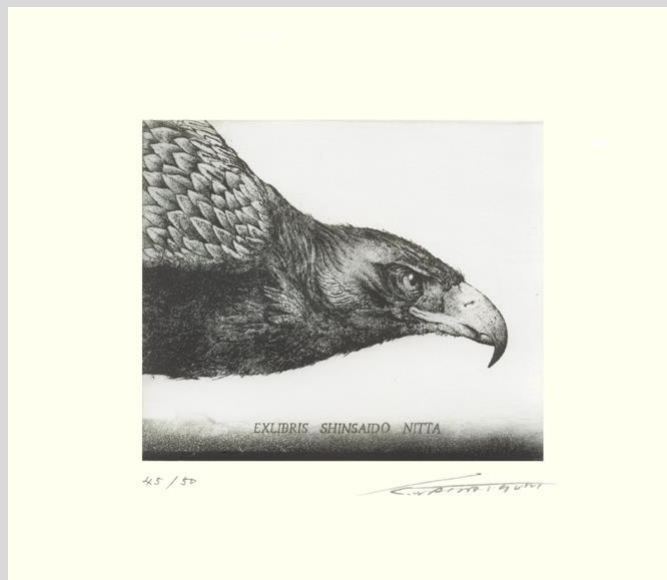


30 Japanese quail  
(*Coturnix japonica*) by  
**Toshio Suda**, entitled  
Japanese quail and  
Japanese lantern, 480 x  
400 mm

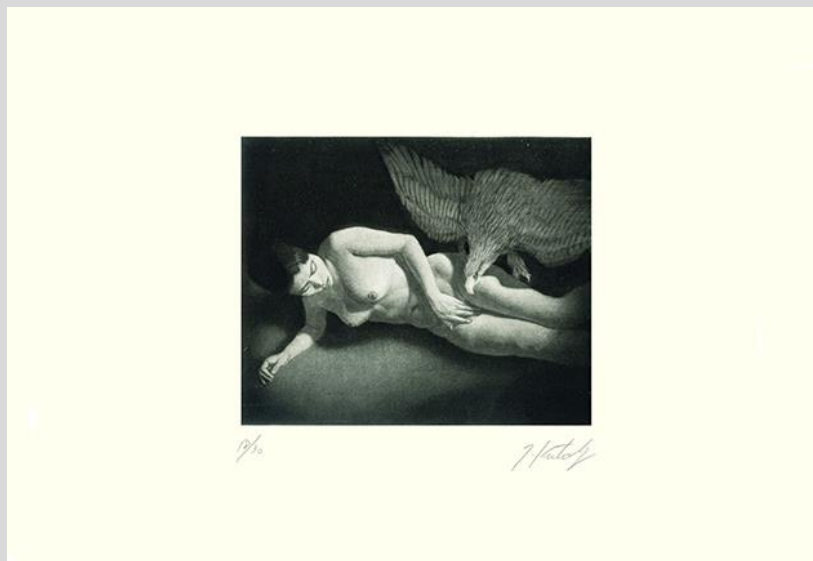




31 Golden eagle (*Aquila chrysaetos*) by **Kōhei Wakatsuka**, 190 x 160 mm



32 Golden eagle (*Aquila chrysaetos*) by **Takeshi Katori**, 395 x 270 mm





33 Great tit (*Parus major*) by Kazuyoshi Kurahashi, entitled bird, 150 x 150 mm



鳥 / 100 21 / Kurahashi



34 Common kingfisher (*Alcedo atthis*)  
by **Masaki Shibuya**, entitled portrait in  
wood – Mr. K, 155 x 165 mm



森の肖像 - K 氏 Masaki Shibuya 6/22





35 Black scoter (*Melanitta nigra*) by **Fuhito Fujimiya**,  
entitled black scoter, 195 x  
135 mm

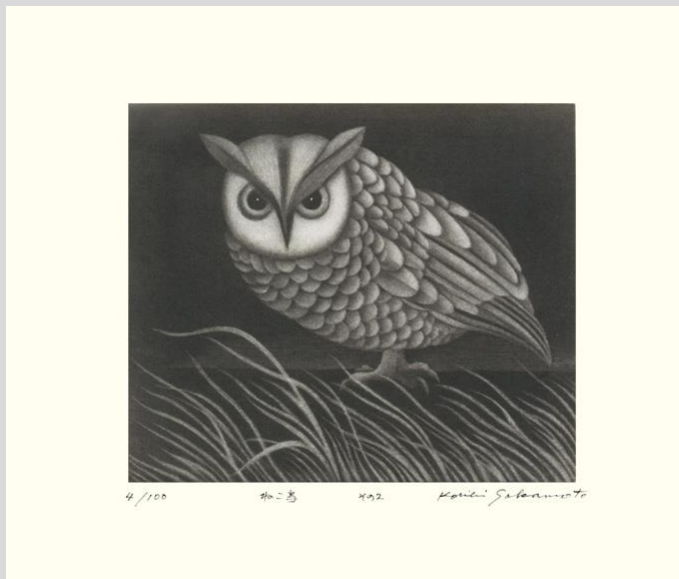


36 Large-billed crow  
(*Corvus macrorhynchos*) by  
Yoritake Seki, 695 x 420 mm

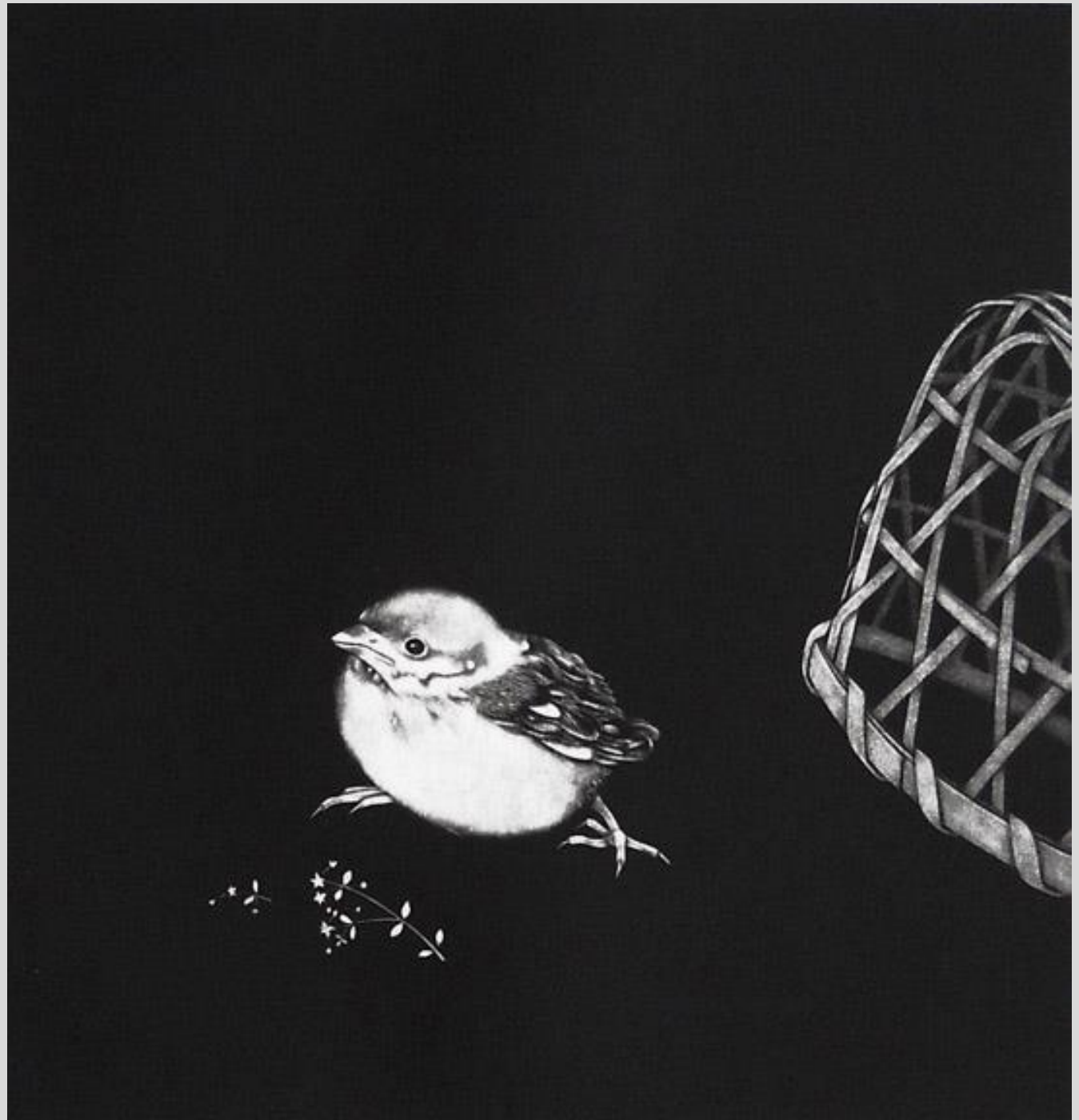
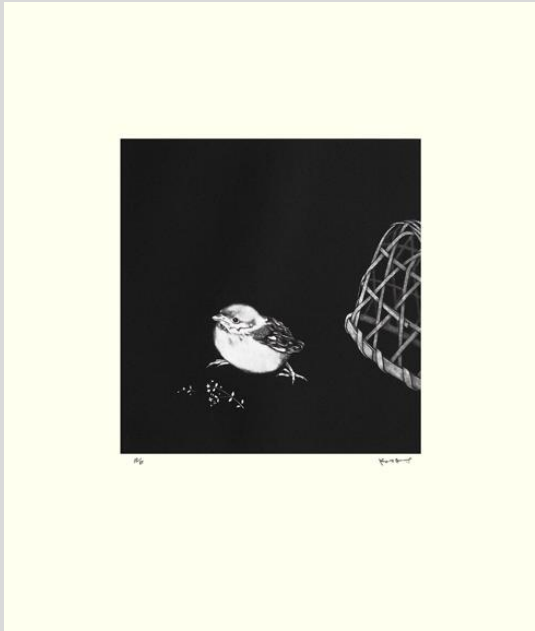




37 Scops owl (*Otus* sp.)  
by **Kōichi Sakamoto**,  
entitled catbird No. 2,  
185 x 150 mm



38 Eurasian tree sparrow (*Passer montanus*) by **Kaoru Saitō**, 380 x 450 mm

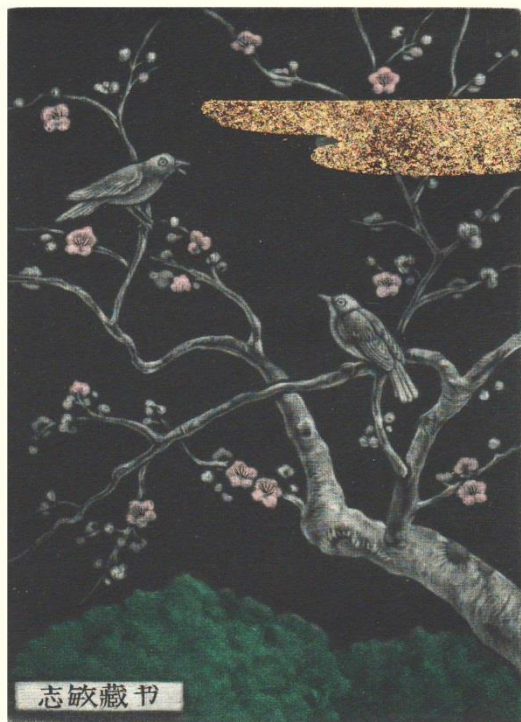




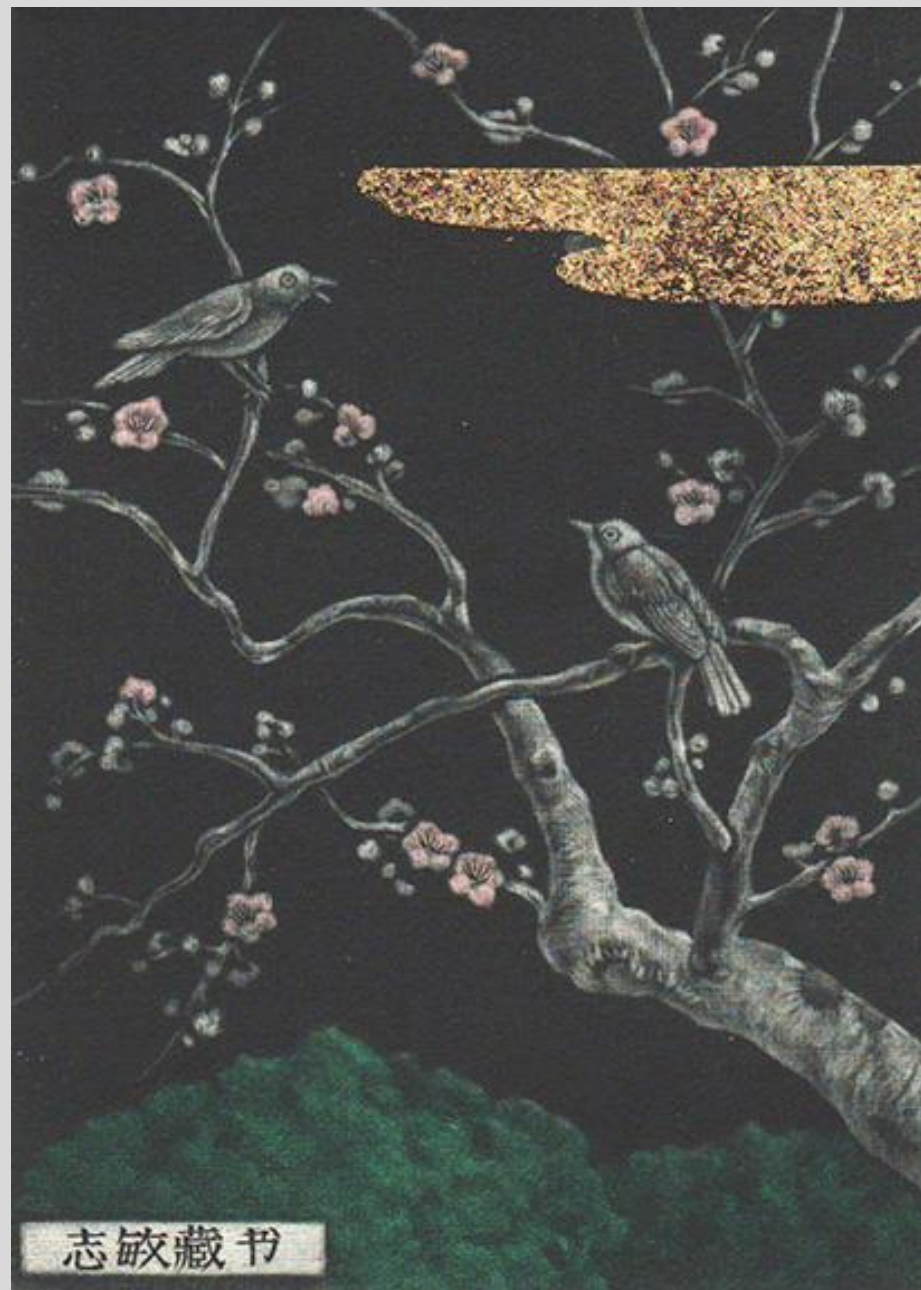
39 Black guineafowl (*Agelastes niger*) by Yasuaki Sanmotoki,  
330 x 420 mm



40 Japanese white-eye (*Zosterops japonicus*) by **Katsunori Hamanishi**, entitled spring song, 140 x 200 mm



AP/50 Spring Song K. Hamanishi





41 Rock dove (*Columba livia*) by **Yoshinobu Masuda**,  
entitled pigeons in Venice, 360 x 550 mm



42 Domestic goose (*Anser cygnoides*) by **Kenji Ushiku**, entitled in the forest (Y), 315 x 495 mm



Kenji Ushiku (理)

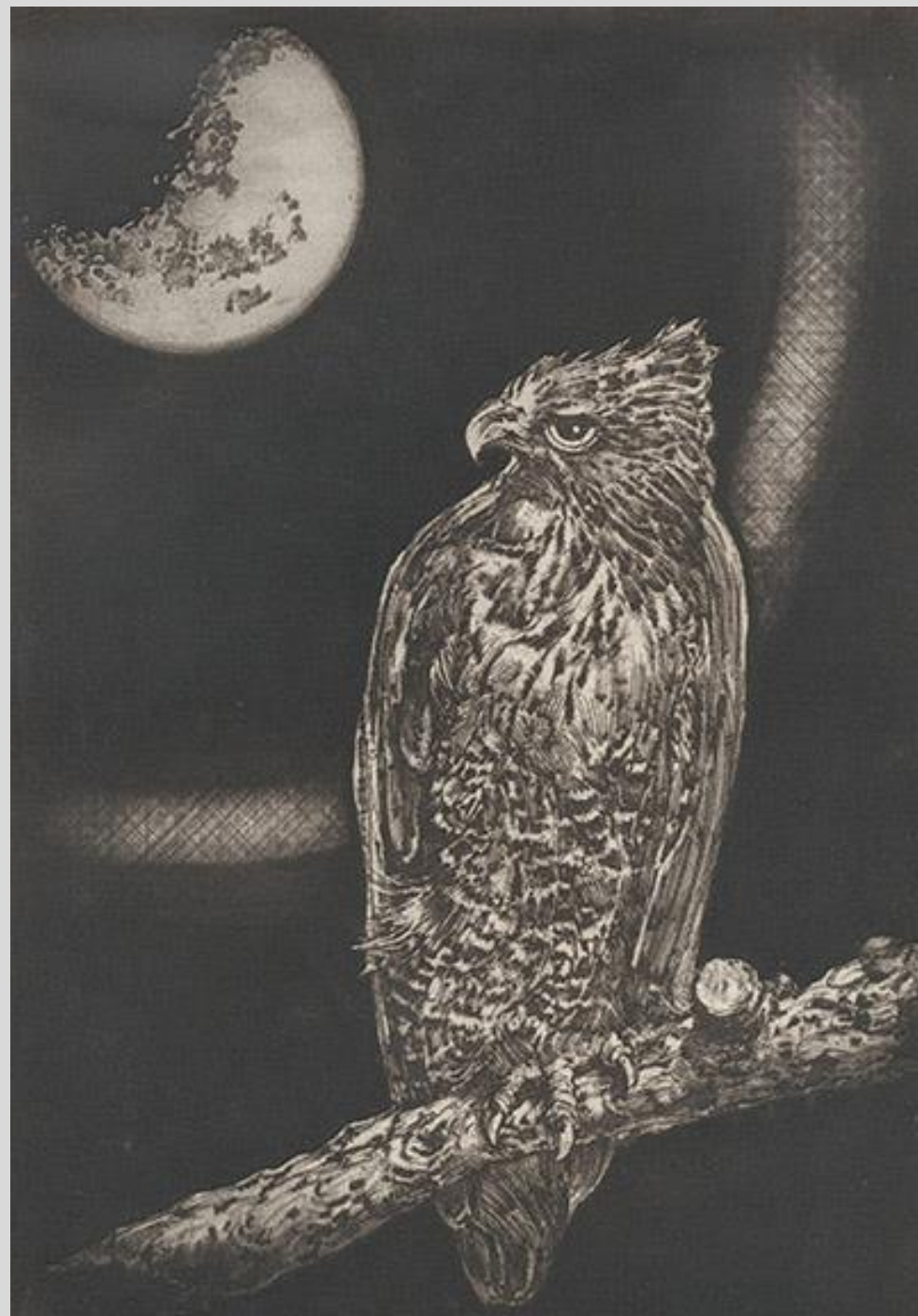




43 Hawk (*Accipiter* sp.) by **Bin Takaba**, entitled  
hawker's haniwa, 225 x 305 mm



Bin Takaba

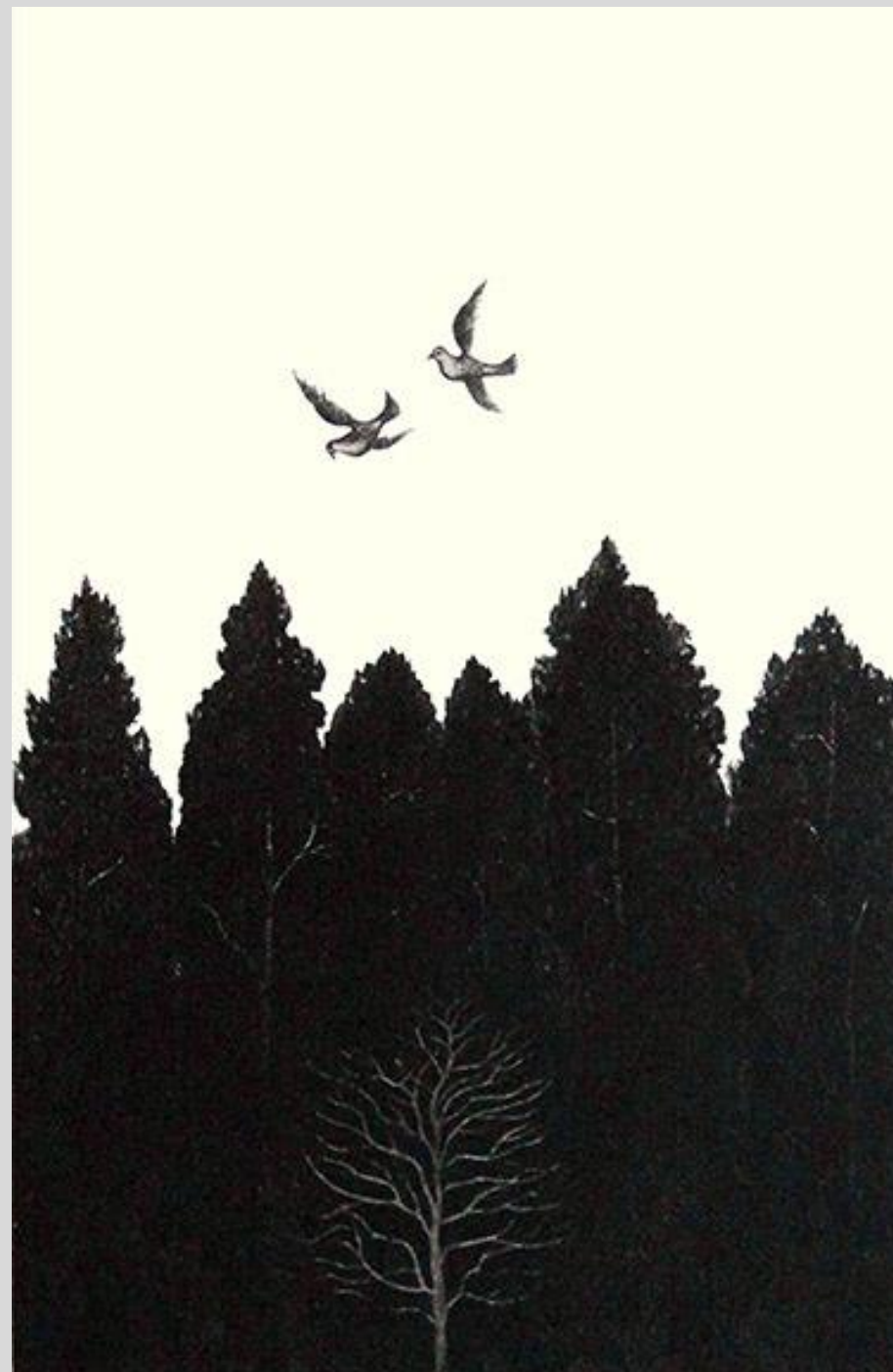
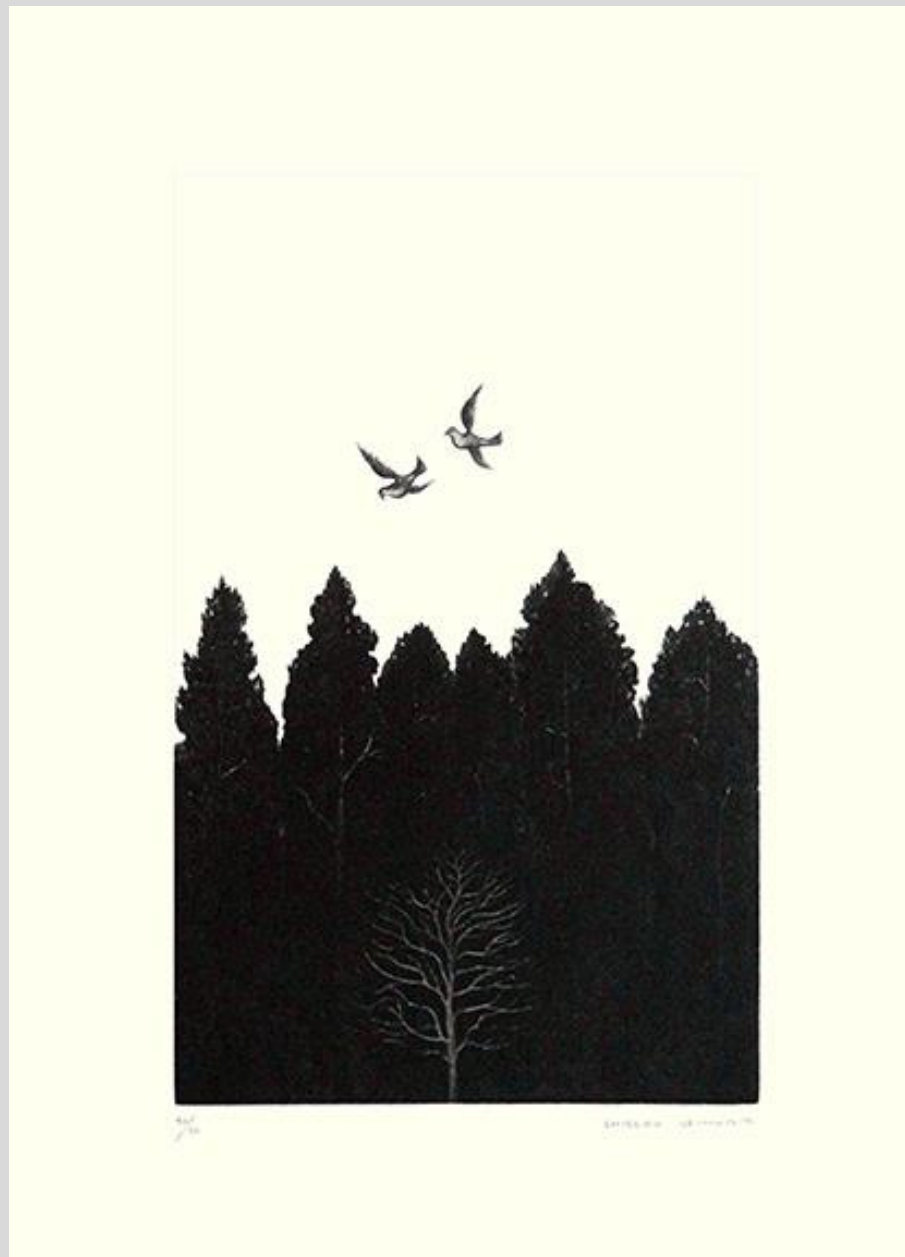




44 Large-billed crow  
(*Corvus macrorhynchos*)  
by **Matazō Kayama**, 120  
x 95 mm



45 Rock dove (*Columba livia*) by Shigeru Kimura, 280 x 380 mm



46 Large-billed crow (*Corvus macrorhynchos*)  
by Tarō Toriumi, entitled bird, 150 x 160 mm

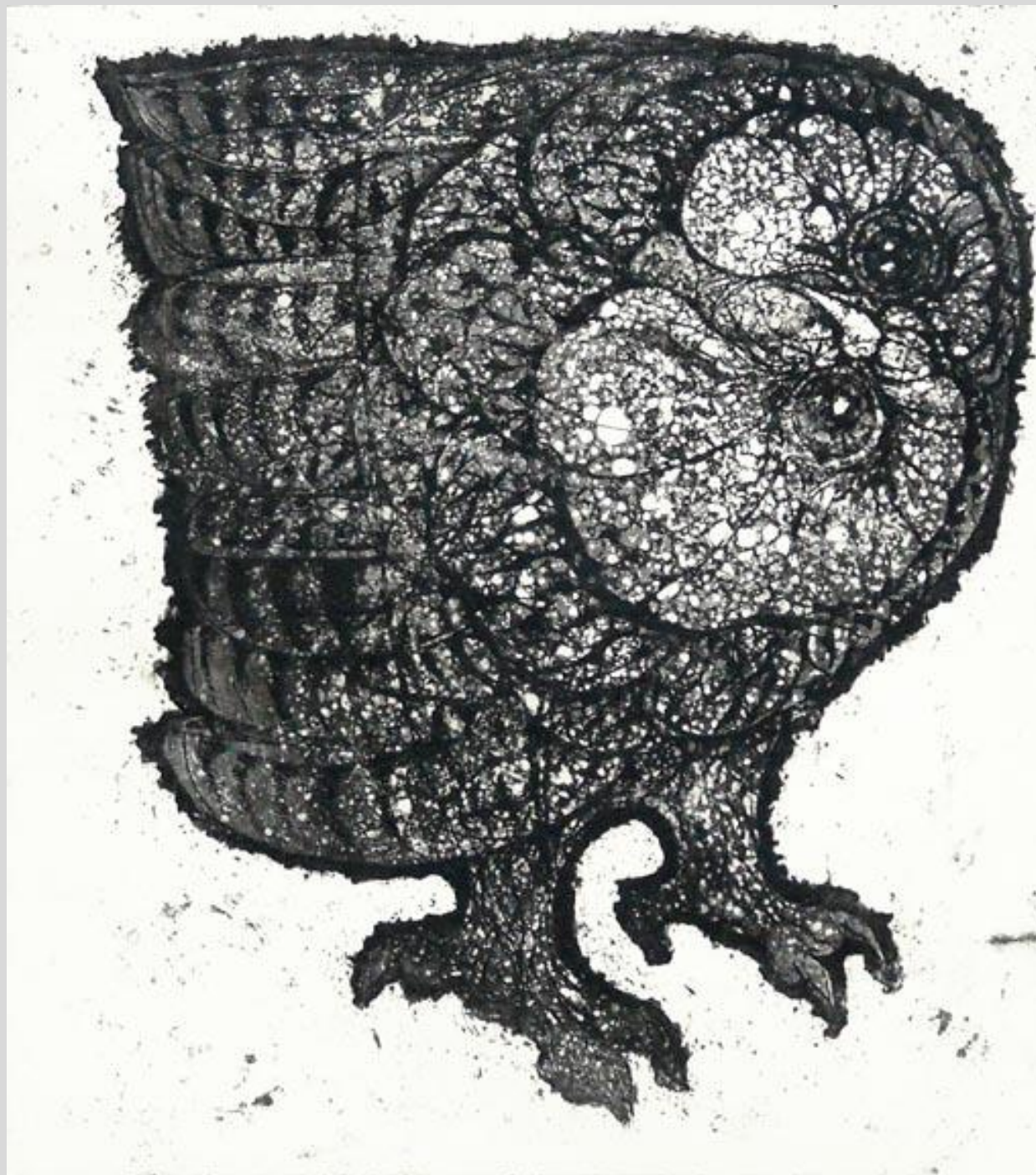


6/25 鳥 T. Toriumi





47 Ural owl (*Strix uralensis*) by  
**Ryōnosuke Shimomura**, entitled OYAT,  
240 x 265 mm





48 Wild turkey (*Meleagris gallopavo*) by Shinzaburō  
Takeda, 165 x 230 mm



2/20

Shinzaburō

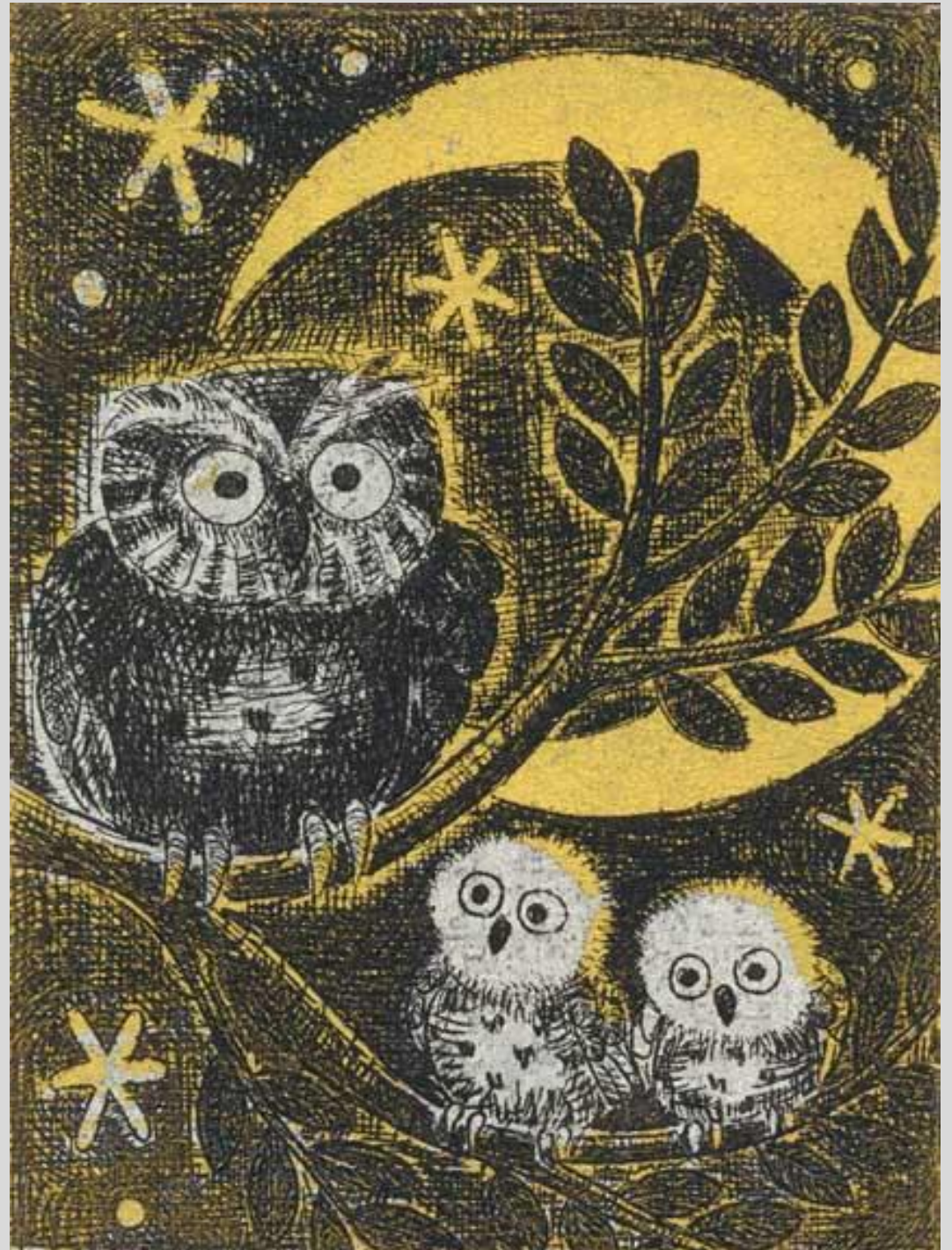




49 Scops owl (*Otus* sp.) by **Makiko Hattori**,  
entitled moonlight owl, 190 x 240 mm



3/00 月夜の子猫 Makiko





50 Rock dove (*Columba livia*) by **Kazuo Nishimura**,  
entitled bird family, 255 x  
165 mm



51 Rock dove (*Columba livia*) by **Mikuo Konoki**,  
345 x 290 mm

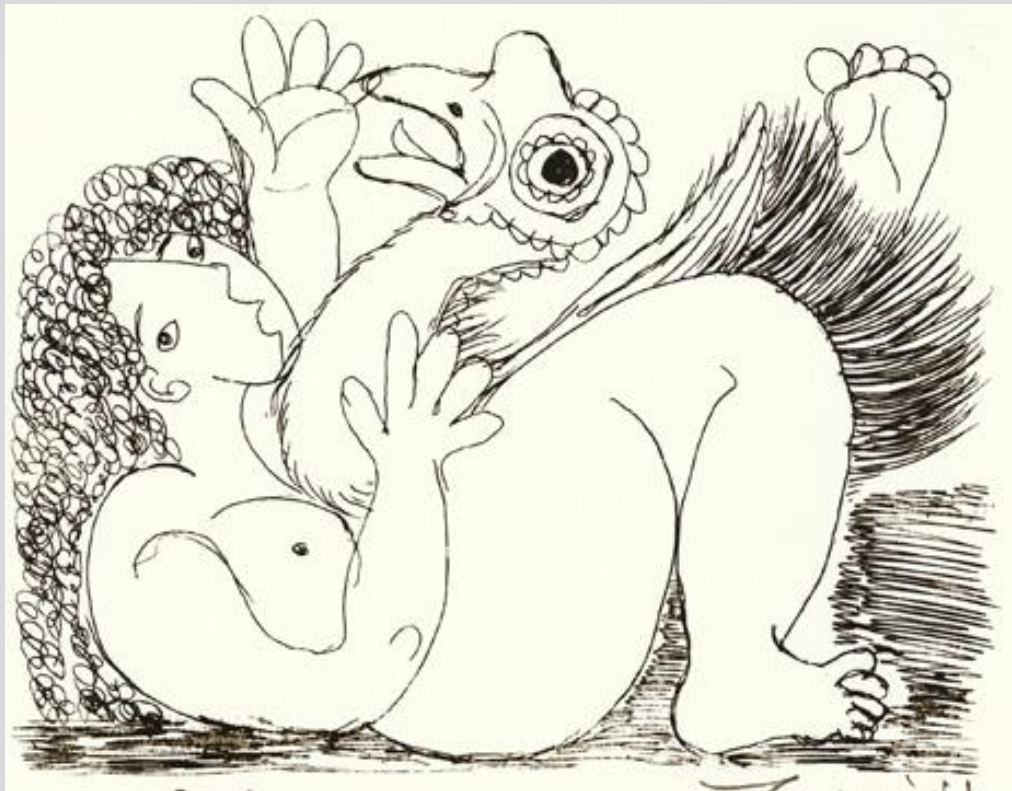




52 Domestic fowl (*Gallus gallus*) by **Teizō Ogaki**,  
entitled today like yesterday  
like tomorrow, 650 x 500  
mm

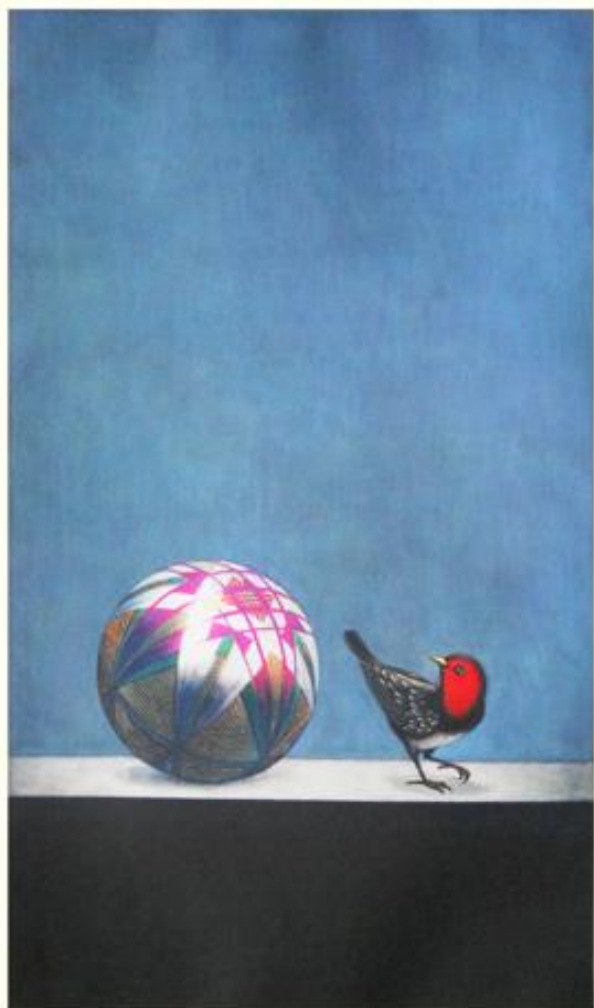


53 Cassowary (*Cassuarius*  
sp.) by **Tamiji Kitagawa**,  
250 x 215 mm

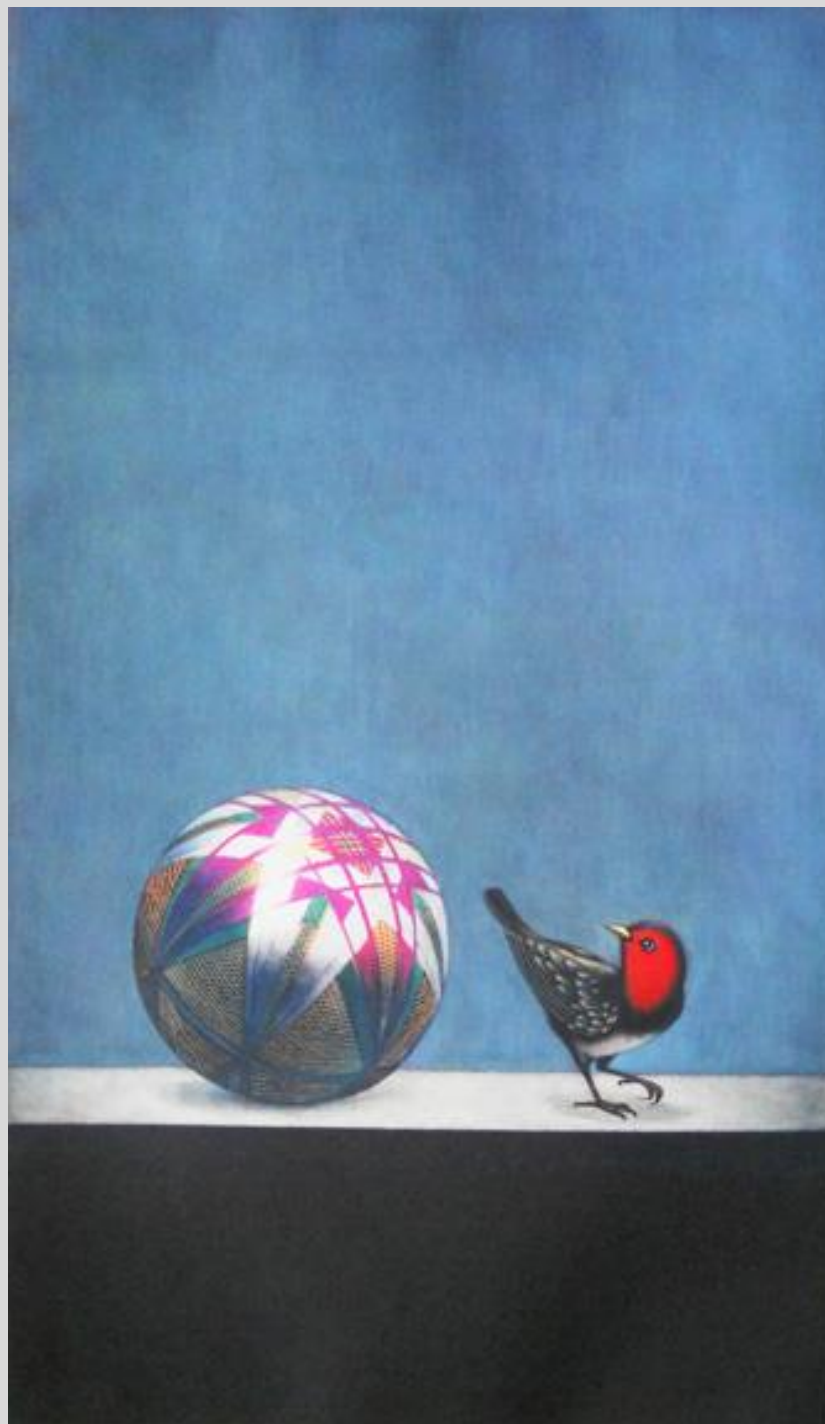




54 Japanese robin (*Erithacus akahige*) by **Ushio Takahashi**, entitled temari ball II, 355 x 535 mm



77/70 + 88 (11) Ushio Takahashi



55 Crane (*Grus* sp.) by Ren Itō, 190 x 245 mm



18/50 Ren Itō





56 Cormorant (*Phalacrocorax* sp.) and crane (*Grus* sp.) by  
Yō Sugano, entitled ancient birds, 180 x 225 mm



26/xxx 古鳥 Yō Sugano



57 Penguin (Family Spheniscidae) by **Hideshi Yoshida**, entitled penguin Othello, 150 x 150 mm





58 Japanese bush-warbler  
(*Cettia diphone*) by  
**Hakudō Inagaki**, 760 x 565  
mm



59 Domestic fowl (*Gallus gallus*) by **Toshio Sakai**, entitled domestic fowl, 320 x 330 mm





60 Hawk (*Accipiter* sp.) by **Mio Omori**, entitled night bird, 440 x 595 mm



✂      60      Mio Omori



61 Unidentified bird by  
**Yasuko Nakanishi**, entitled  
energy, 235 x 190 mm





62 Unidentified bird by  
**Eiko Kawakubo**, entitled  
Mexico, 195 x 165 mm



63  
Unidentified  
birds by  
**Mizue  
Shiratori**,  
entitled  
movement,  
180 x 100  
mm



34/50 .1978

Juego



mizue Shiratori  
白鳥瑞恵

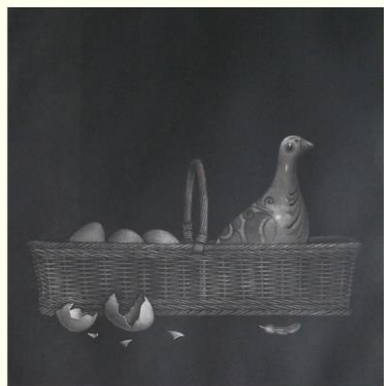




64 Domestic goose (*Anser cygnoides*) by **Seishi Ozaku**, 285 x 380 mm



65 Rock dove (*Columba livia*) by  
**Nobuo Satō**, entitled dove of  
Mexico, 480 x 530 mm

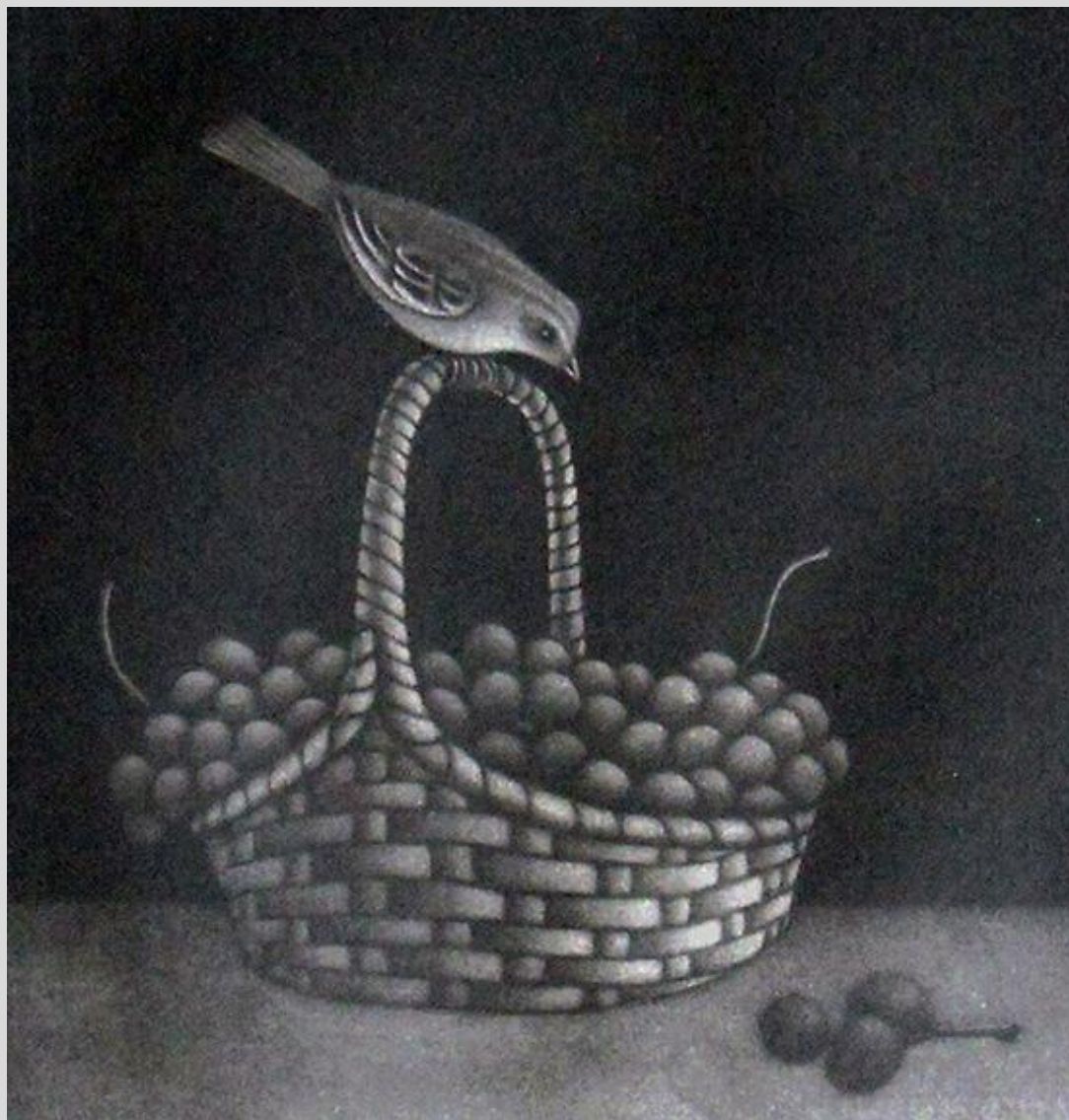




66 Owl (Family Strigidae) by **Minoru Yokota**, 190 x 250 mm



67 Unidentified bird by **Taira Motomura**, 290 x 380 mm





68 Unidentified birds by **Shiho Murakami**, 100 x 150 mm





69 Unidentified bird by **Hideko Seki**, entitled to the garden, 330 x 250 mm



70 Unidentified bird by  
**Akahide Imamura**, entitled  
bird song, 545 x 395 mm



46/150

9/9/62





71 Unidentified bird by **Keiko Minami**, 370 x 450 mm



7/10

Keiko Minami



72 Unidentified bird by **Hideo Horii**, entitled person who keeps a pet bird, 535 x 765 mm





73 Unidentified bird by **Keiko Arakawa**, entitled garden of the little bird, 245 x 320 mm



7/12 小鳥の庭 Keiko Arakawa



74 Unidentified bird by **Tadayoshi Nakabayashi**, entitled not all things go bad, 345 x 445 mm





75 Unidentified bird by **Seiji Togō**, 495 x 640 mm

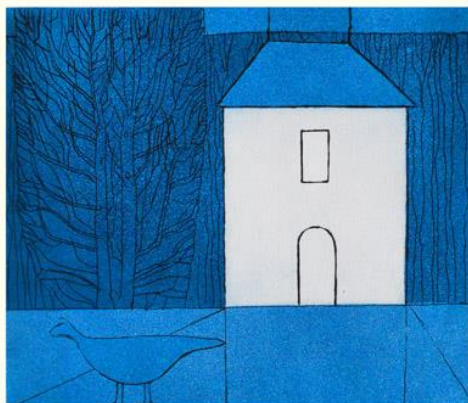


76 Crane (*Grus sp.*) by  
**Masao Yoshida**, 615 x 480  
mm



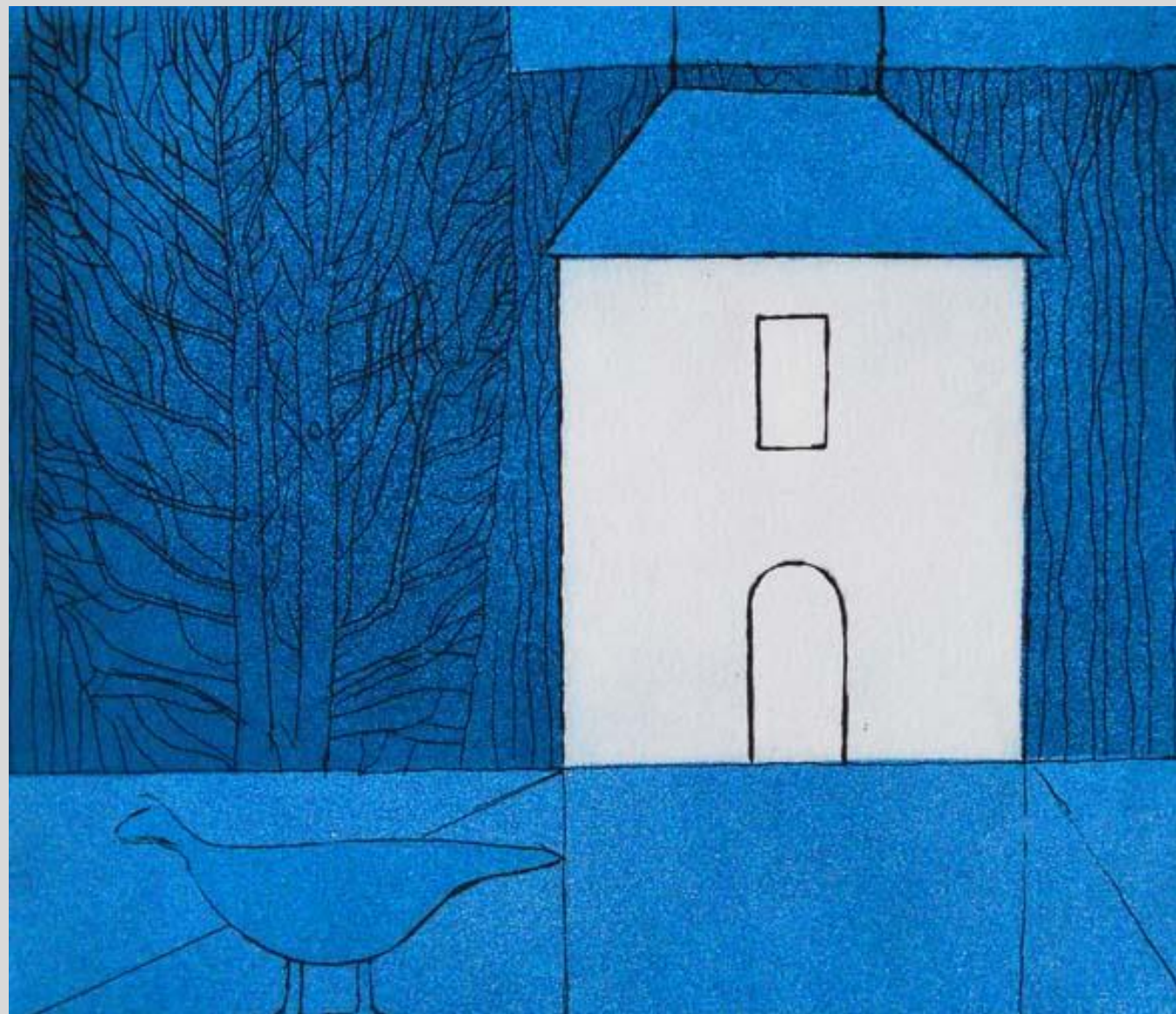


77 Unidentified bird by **Shōsuke Ōsawa**, 285 x 380 mm



96/18

S. Ōsawa

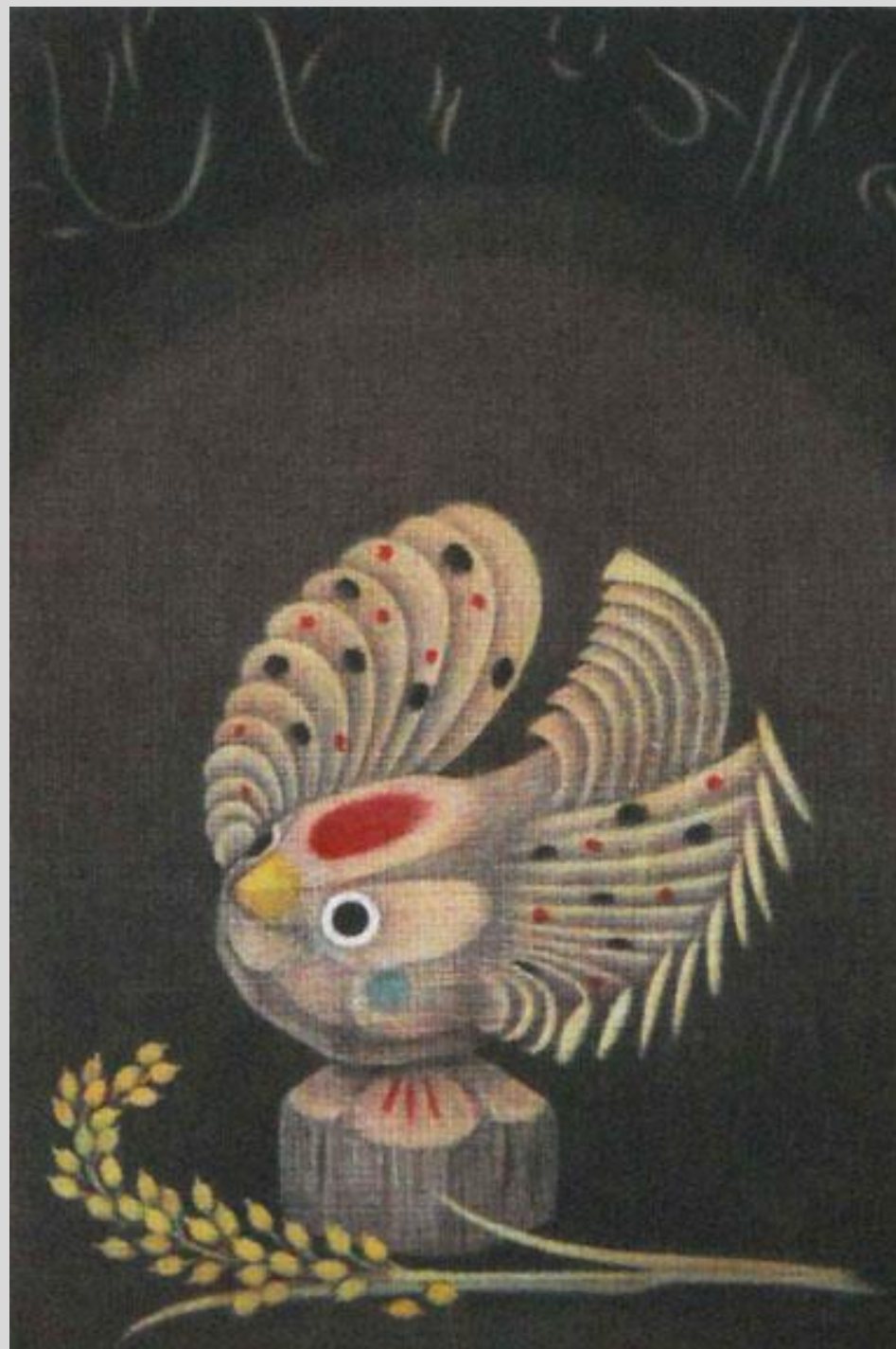


78 Eurasian tree sparrow (*Passer montanus*) by **Atsushi Shimizu**, entitled Eurasian tree sparrow, 235 x 310 mm



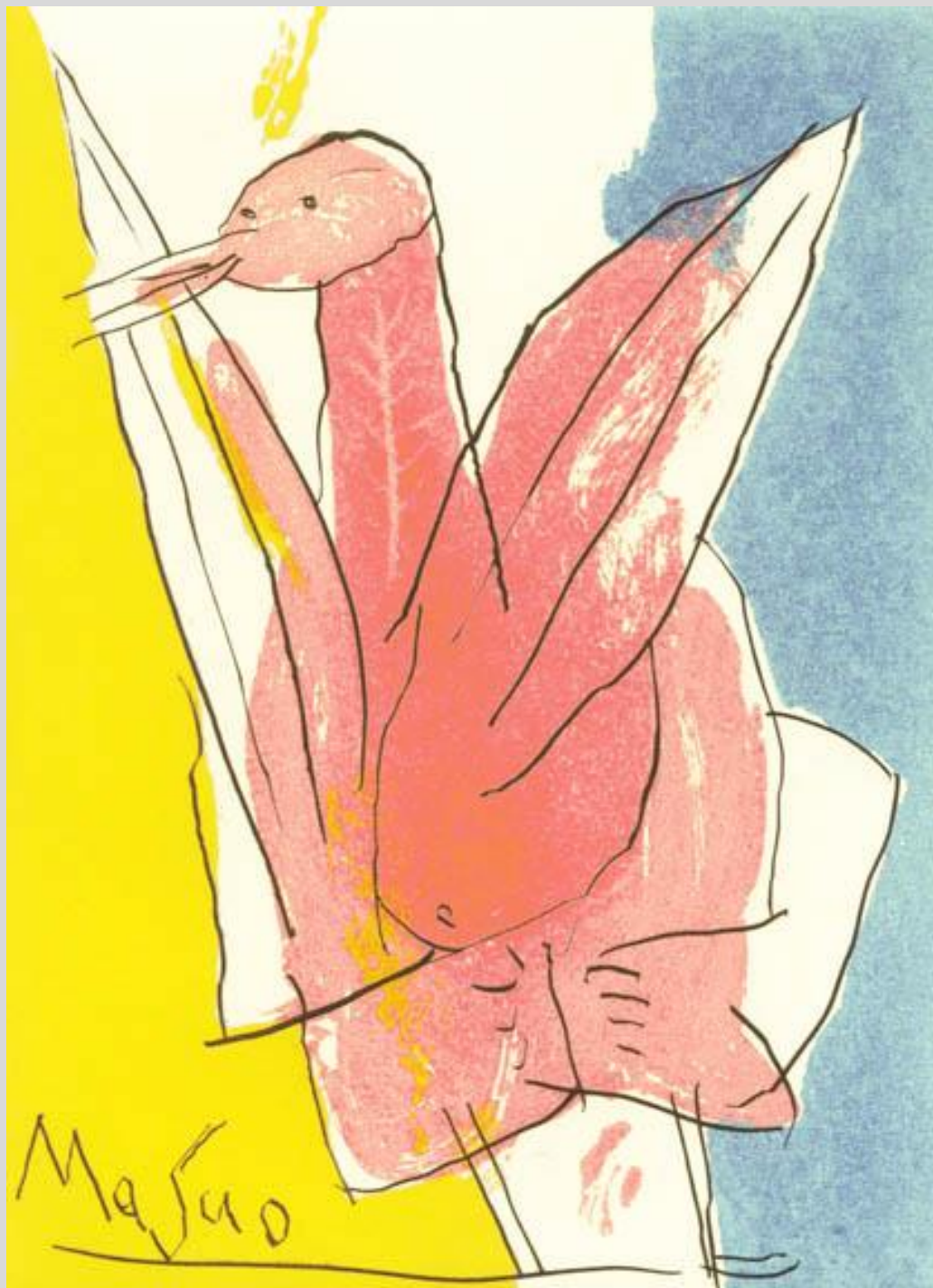
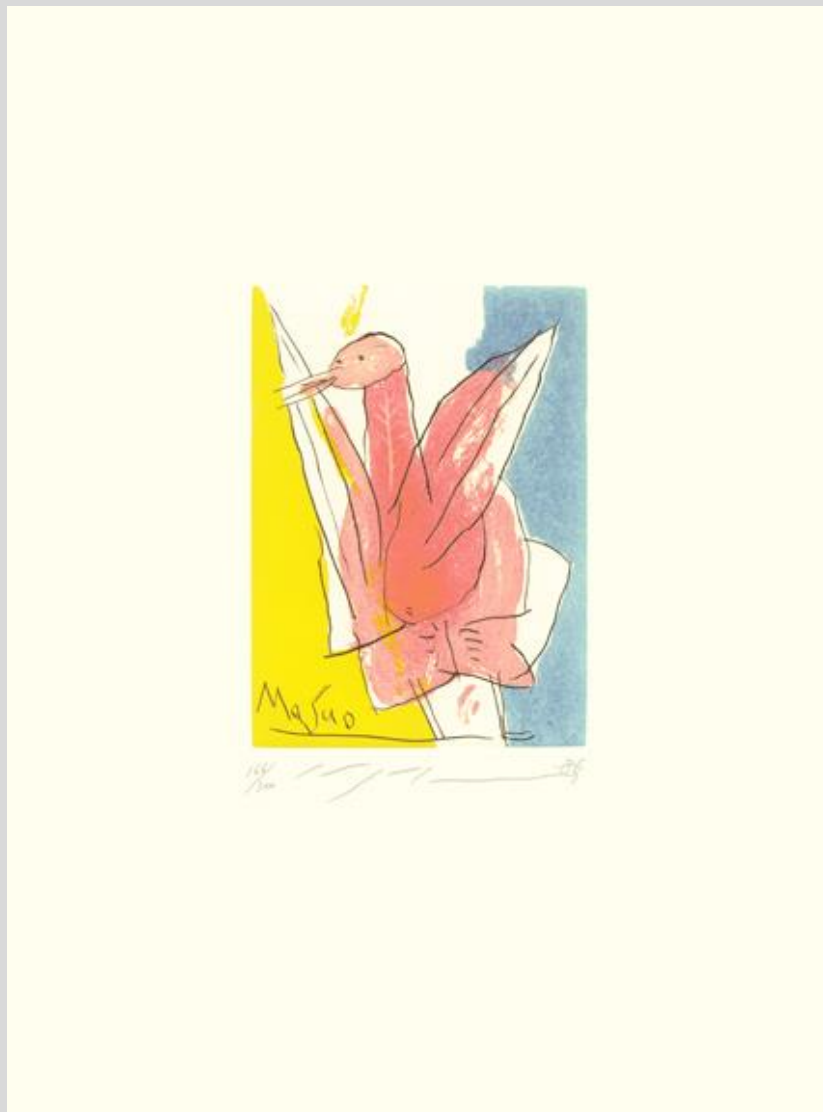
1970

Atsushi Shimizu





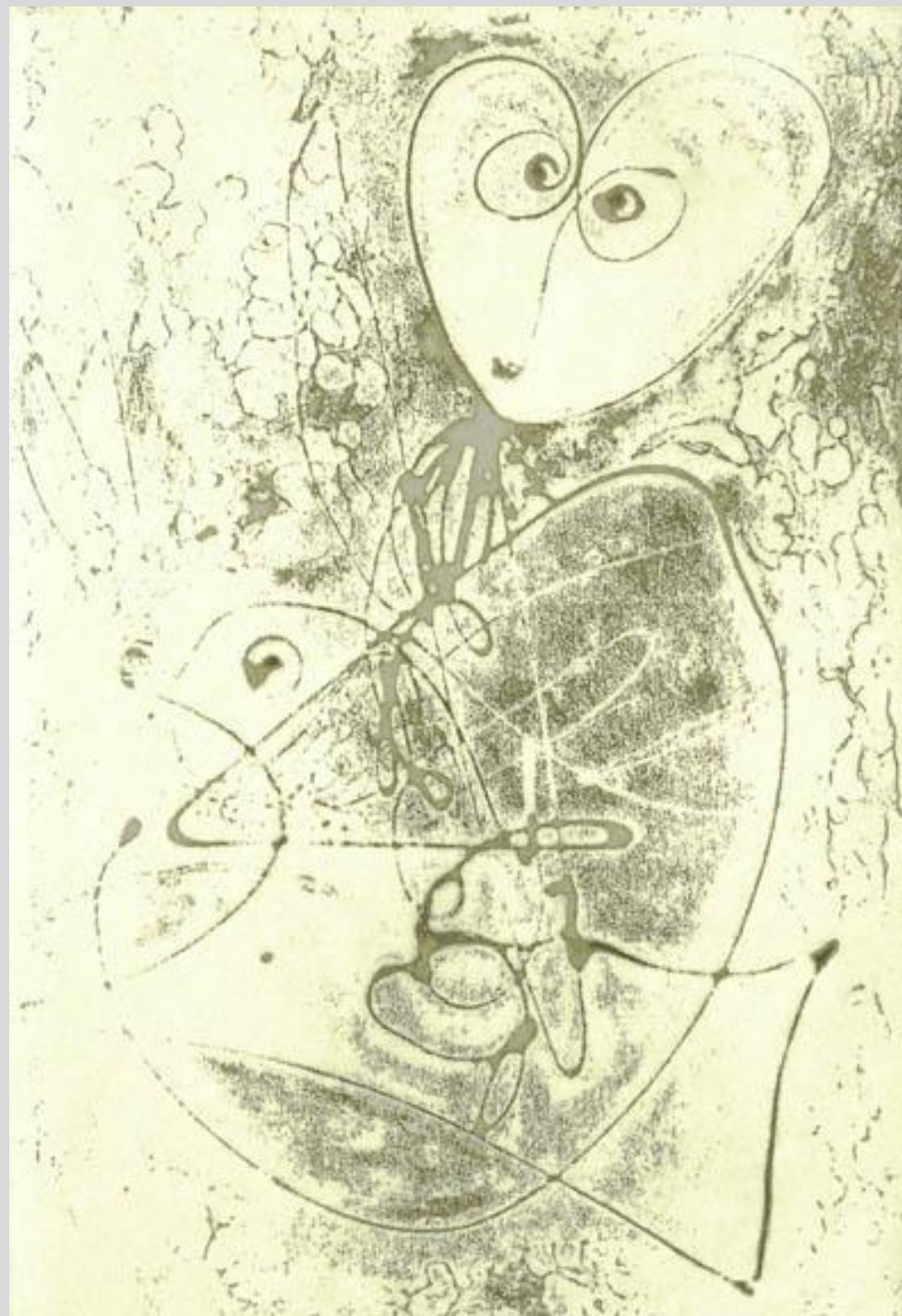
79 Unidentified bird by **Masuo Ikeda**, entitled happy bird, 285 x 380 mm



80 Unidentified bird by **Yoshirō Nagase**, 225 x 300 mm



*Nagase.77*

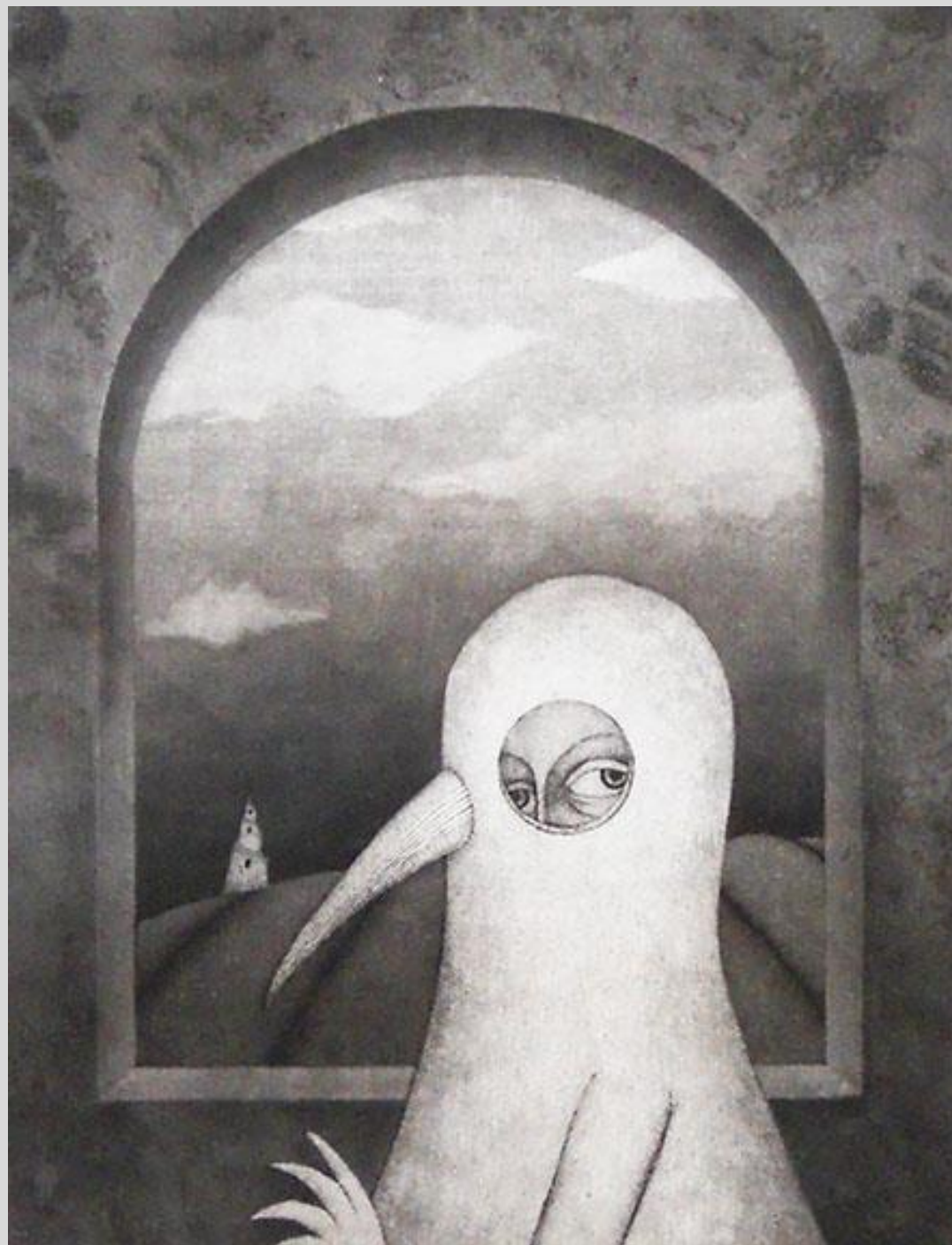




81 Unidentified bird by **Kiyomi Katō**, 130 x 130 mm



82 Unidentified bird by **Shigeru Matsuzaki**, 350 x 450 mm

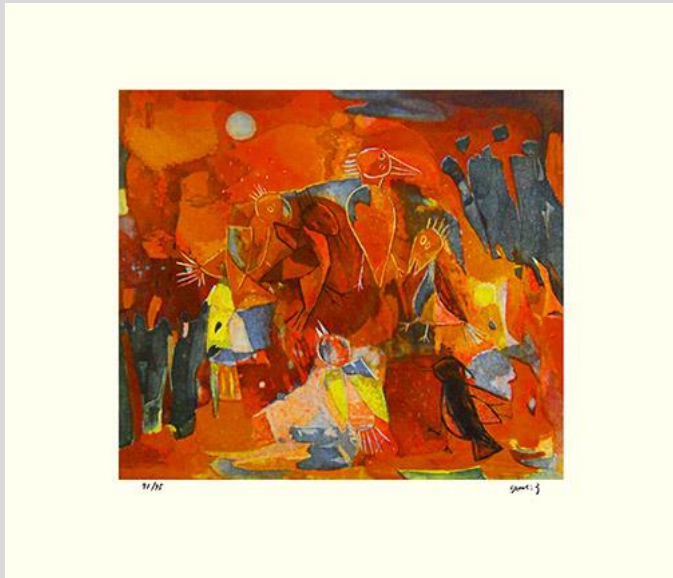




83 Unidentified bird by **Hideo Sugita**, entitled bird dreams, 230 x 300 mm

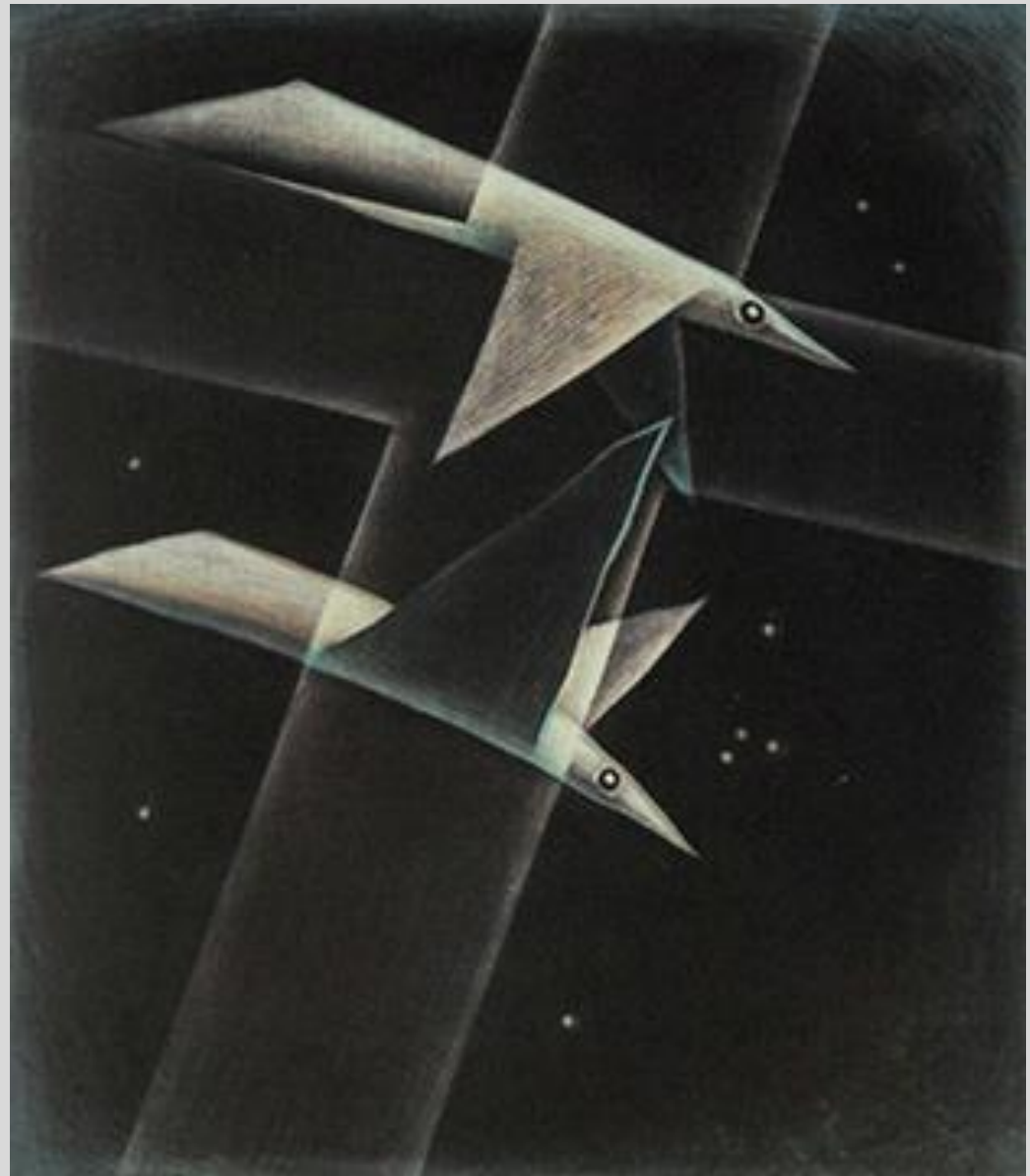


84 Unidentified birds by  
**Yoshi Takahashi**, entitled  
bird dance, 655 x 565 mm





85 Unidentified bird by **Yukio Fukazawa**,  
entitled birds in the sky, 295 x 345 mm



[Back to Exhibitions](#)